

**TANCO AUTOWRAP
250 SL MODEL 1995
OPERATORS HANDBOOK
AND
PARTS LIST
WD65-250-SL-M0695**

GUARANTEE

Subject as hereunder provided, the Sellers undertake to correct either by repair or at their election by replacement any defect of material or workmanship which occurs in any of its goods within twelve months after delivery of such goods to first user, with the exception of contractors or commercial users when warranty period is six months.

In respect of Autowraps the warranty period is for 12 months or 8000 bales which ever occurs first.

In respect of Aerways tine breakage will be assessed on an individual basis in every case.

The term goods when used in this document means the article or articles described in invoice as sold by the sellers but does not include equipment or proprietary parts or accessories not manufactured by the sellers. The sellers, however, undertake to pass on so far as they legally can to the first user the benefit of any warranty given to the Sellers by the suppliers of such equipment, parts or accessories.

This understanding shall not apply to:

- (a) Any goods which have been sold by the first user.
- (b) Any goods which have been injured by unfair wear and tear, neglect or improper use.
- (c) Any goods the identification marks of which have been altered or removed.
- (d) Any goods which have not received the basic normal maintenance such as tightening of bolts, nuts, tines, hose connections and fittings and normal lubrication with the recommended lubricant.
- (e) The use of any product on tractors exceeding the recommended horsepower.
- (f) Any goods which have been altered or repaired other than on instruction or with the written approval of the Seller or to which any part not manufactured or having written approval by the Sellers have been fixed.
- (g) Any second-hand goods or part thereof.

Any allegedly defective part or parts returned to the Sellers must be sent carriage paid. No claim for repair or replacement will be entertained unless upon discovery of the alleged defect written notification is sent to the Sellers giving, at the same time, the name of the Buyer from whom the goods were purchased and the date of purchase together with full details of the alleged defect and the circumstances involved, also the serial number of the machine etc.,

The Sellers shall be under no liability to their Buyers and first and subsequent users of their goods or to any other person or persons for loss or damages howsoever arising in respect of either personal injuries or for arising out of, or in any way connected with or arising from the manufacturers sale, handling, repair, maintenance, replacement or use of its goods or the failure or malfunction of any of its goods.

Representation and/or warranties made by any person (including Buyers and employees and other representatives of the Seller) which are inconsistent or conflicting with these conditions are not binding upon the Sellers unless given in writing and signed by a Director of the Sellers.

CLAIMS

If you wish to make a claim under guarantee.

1. Immediately, stop using the machine.
2. List the details of the machine and damaged item, (as shown inside the front cover of this booklet).
3. Consult with your Tanco dealer (supplier) and have him forward your claim and the damaged item to Tanco.

INDEX**200SL MODEL****PAGE NO.**

GENERAL SAFETY INSTRUCTIONS	1/2/3/4/5
SPECIAL SAFETY SPECIFICATIONS	6
SAFETY DECALS	7
TECHNICAL SPECIFICATIONS	8
PRE DELIVERY INSTRUCTIONS	9/10/11
TRANSPORT INSTRUCTIONS	12
MACHINE IDENTIFICATION	12
PREPARATION OF A NEW MACHINE	13
HYDRAULIC CONNECTIONS	13
BALE WRAP CONTROLLER	14
BALE WRAP CONTROLLER FUNCTIONS	15
OPERATING INSTRUCTIONS	16
WARNING; LIFT ARM	17
FILM OVERLAP SYSTEM	18
SERVICE AND MAINTENANCE	19/20
FILM THREADING DIAGRAM	21
GEARBOX CHAIN DRIVE CHAIN TENSIONING SYSTEM	22
TURNTABLE CHAIN DRIVE TENSIONING SYSTEM	23
FILM ADAPTOR OPERATING INSTRUCTIONS	24
HYDRAULIC CIRCUIT DIAGRAM 250 SL MODEL	25
HYDRAULIC CIRCUIT DIAGRAM 250 SL7 MODEL	26
HYDRAULIC COMPONENTS (250 SL MODEL)	27
PARTS LIST FOR ABOVE	27:1
HYDRAULIC CIRCUIT DIAGRAM (200SL7 MODEL)	28
PARTS LIST FOR ABOVE	28:1
ELECTRICAL COMPONENTS ILLUSTRATED	29
PARTS LIST FOR ABOVE	29:1
CONSTANT INDEXING DRIVE ASSY ILLUSTRATED	30
PARTS LIST FOR ABOVE	30:1
AUTOWRAP ILLUSTRATED (250SL MODEL)	31
PARTS LIST FOR ABOVE	31:1
AUTOWRAP ILLUSTRATED (250SL MODEL)	32
PARTS LIST FOR ABOVE	32:1
TURNTABLE CHAIN DRIVE ASSEMBLY	33
PARTS LIST FOR ABOVE	33:1
LIFT ARM ASSEMBLY ILLUSTRATED (250SL MODEL)	34
PARTS LIST FOR ABOVE	34:1
FILM DISPENSING SYSTEM ILLUSTRATED (250SL MODEL)	35
PARTS LIST FOR ABOVE	35:1
FILM DISPENSING SYSTEM ILLUSTRATED (250SL7 MODEL)	36
PARTS LIST FOR ABOVE	36:1
FAULT FINDING SUMMARY	37/38
CUT AND START UNIT ILLUSTRATED	39
PARTS LIST FOR ABOVE	39:1
SLIP RING ASSY ILLUSTRATED	40
PARTS LIST FOR ABOVE	40:1
SENSOR MAGNET MOUNTING BRACKETS ILLUSTRATED	41
PARTS LIST FOR ABOVE	41:1
CUT AND START ELECTRICAL CIRCUIT	42
CUT AND START FAULT FINDING SUMMARY	43/44

GENERAL SAFETY RECOMMENDATIONS

Before operating the machine, always ensure that the tractor and machine meet with work safety and road traffic regulations.

BASIC PRINCIPLES

- 1: In addition to the recommendations given in this manual, legislation on work safety and accident prevention must also be respected.
- 2: Advice is indicated on the machine, specifying safety recommendations in order to prevent accidents.
- 3: Before travelling on public roads, the operator must ensure that the machine conforms to road traffic regulations.
- 4: Before starting work, the operator must be familiar with all machine controls, handling devices and their functions. Once at work, it is too late to do this!
- 5: Do not wear loose clothing which could become caught up in moving elements.
- 6: The tractor should be equipped with a safety cab.
- 7: Before starting up the machine and beginning work, check the surrounding area (beware of children!). Make sure there is sufficient visibility. Keep all people and animals away from the danger zone of the machine (risk of projection!).
- 8: Carrying people or animals on the machine when working or in transport is strictly forbidden.
- 9: Machine must only be attached to tractor using means provided and in accordance with current safety standards.
- 10: Special care should be taken when attaching or removing the machine from the tractor.
- 11: Before transporting the machine on public roads, ensure that all legally required guards and indicators (lights, reflectors ...) are in place and in good operation.
- 12: All operating controls (cords, cables, rods etc.) must be positioned so that they cannot be set off accidentally, risking accident or damage.
- 13: Before travelling on public roads, put the machine into its transport position as instructed in this operators manual.
- 14: Never leave the tractor seat while the machine is operating.

- 15: Drive speed must be adapted to ground conditions as well as to roads and paths. Always avoid abrupt changes of direction.
- 16: Before operating the machine, ensure that all safety guards are firmly in place and in good condition. If worn or damaged, replace immediately.
- 17: Before operating the machine, check the tightness of all nuts and bolts, particularly on fixing elements (blades, tines, knives, spades etc.,).
- 18: Keep clear of the machine operating area.
- 19: **WARNING!** Danger of crushing and shearing can exist when components are operated by hydraulic or pneumatic controls.
- 20: Before leaving the tractor or before adjusting, maintaining or repairing the machine, turn off the engine, remove the ignition key and wait until all moving parts have come to a complete stop.
- 21: Do not stand between the tractor and the machine unless the hand brake is tight and/or stops have been placed under the wheels.
- 22: Before any adjustments, maintenance or repairs are carried out, ensure that the machine cannot be started up accidentally.

ADDITIONAL RECOMMENDATIONS FOR LINKAGE MOUNTED MACHINES

- 1: Before attaching the machine, ensure that the front tractor axle is sufficiently ballasted. Ballast is to be placed on the supports provided in accordance with instructions of the tractor manufacturer.
- 2: Do not exceed the maximum axle load or the overall transport weight prescribed by the tractor manufacturer.
- 3: Precision steering, tractor adherence, road holding and efficient braking are influenced by the type of implement, weight, ballast of front axle, ground or road conditions. It is therefore of utmost importance to be cautious in every given situation.
- 4: Be particularly cautious when turning corners, paying attention to machine overhang, length, height and weight.

SAFETY RECOMMENDATIONS FOR ATTACHING IMPLEMENTS TO TRACTOR

- 1: When attaching or removing the machine from the tractor, position hydraulic lift control lever in such a way that it cannot be set off accidentally.
- 2: When attaching the machine to the tractor hydraulic linkage, ensure that diameter of the link pins corresponds to the diameter of the ball joints.
- 3: **WARNING!** Danger of crushing and shearing can exist in the lifting zone of the tractor hydraulic linkage!
- 4: Do not stand between the tractor and the machine when operating the outer lever of the lift mechanism.
- 5: In transport, the machine lift mechanism should be stabilized by tractor tie rods to avoid floatation and side shifting.
- 6: When transporting the machine, lock the hydraulic lift control lever in place so that it cannot be lowered accidentally.

HYDRAULIC SYSTEM

- 1: **WARNING!** Hydraulic system is under pressure.
- 2: When fitting hydraulic motors or cylinders, ensure that connections have been made correctly, as per manufacturers instructions.
- 3: Before connecting hoses to the tractor hydraulics, ensure that tractor and machine circuits are not under pressure.
- 4: It is strongly recommended that the operator marks the hydraulic connections between tractor and machine to avoid making a wrong connection. **WARNING!** Functions could be reversed (for example: lift/lower).
- 5: Check hydraulic hoses regularly! Worn or damaged hoses must be replaced immediately. Replacement parts must be in accordance with the manufacturers recommendations concerning specifications and quality.
- 6: Should a leak be found, take all necessary precautions to avoid accidents.
- 7: Any liquid under pressure (particularly oil from hydraulics) can penetrate the skin and cause severe injury. If injured, see a doctor immediately, there could be a danger of infection.
- 8: Before any adjustments, maintenance or repairs are carried out, lower the machine, depressurize the circuit, turn off the engine and remove the ignition key.

MAINTENANCE

- 1: Before checking for any machine malfunction and before adjusting, maintaining or repairing the machine, turn off engine and remove ignition key.
- 2: Check tightness of nuts and bolts regularly. Retighten if necessary.
- 3: If the machine is raised, prop it up in a stable position before carrying out any maintenance work.
- 4: When replacing a working part, wear protection gloves and use only standardized tools.
- 5: It is forbidden to discard any oil, grease or filters. These must be given to waste disposal organisations to protect the environment.
- 6: Disconnect power source before any work is done to the electric system.

- 7: Check safety guards regularly, particularly those that are subject to wear. Replace immediately if damaged.
- 8: Spare parts used must be in accordance with specifications and standards as defined by the manufacturer. Use only genuine TANCO parts.
- 9: Before any electric welding is carried out on tractor or attached machine, disconnect generator and battery terminals.
- 10: Repairs on elements under pressure or tension (springs, accumulators etc.) must only be carried out by competent persons with standardized equipment.

SPECIAL SAFETY INSTRUCTIONS

1. Stop engine of tractor before working on machine.
2. Put a suitable prop under raised platform before working in this area.
3. Always raise Lift Arm and fit safety prop before transporting machine on public roads.
4. Lift Arms should always be lowered before operating turntable.
5. Ensure platform rollers are parallel to Lift Arm before arm is raised.
6. On Autowrap models fitted with hydraulic bale ramp it is essential that the hydraulic hose is not disconnected from the hydraulic cylinder or hydraulic accumulator. This system is charged under pressure. Also, do not attempt to open the hydraulic accumulator as this is a pressurised unit.

OPERATING SAFETY INSTRUCTIONS

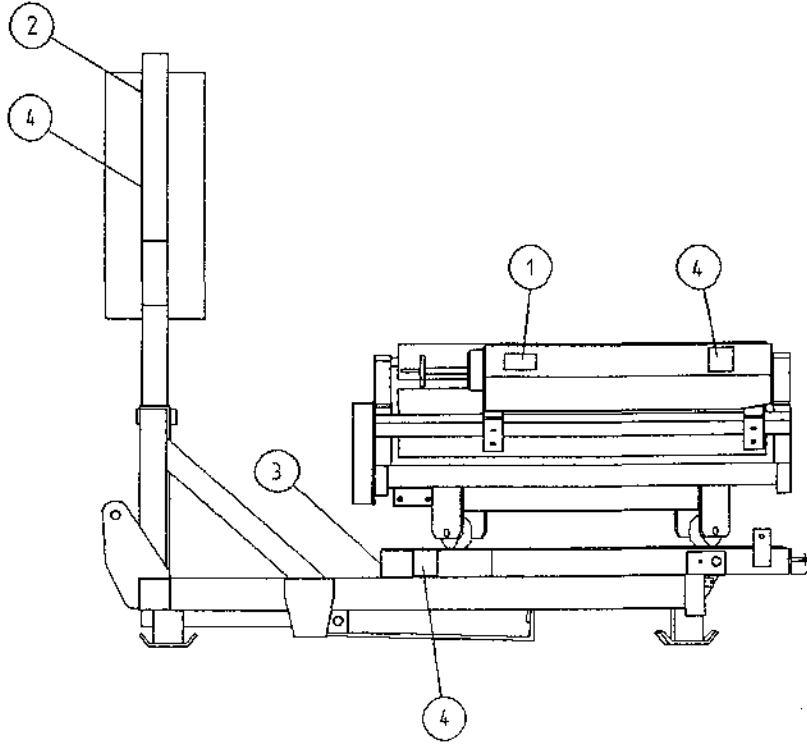
1. Operators should have their hands on the controls at all times when machine is in use.
2. Autowrap control unit and level controls must remain in the tractor cab at all times. The operator must at no time leave the tractor cab when the machine is in motion.
3. Keep onlookers clear of machine at all times. Danger zone is 5 metres.
4. Beware of rotating turntable and all moving parts.
5. If not operated correctly the bale could fly off the turntable. The end support rollers must always be fitted. Do not exceed recommended turntable speed of 30 r.p.m. Misshapen bales combined with excessive turntable speeds can be dangerous.
6. Care must be taken when tipping bales from machine on sloping ground and during subsequent handling to ensure that they do not roll, thus causing hazard.

THINK OF YOUR PERSONAL SAFETY AND THAT OF OTHERS AT ALL TIMES.

SAFETY DECALS

The following safety decals have been placed on your machine in the areas indicated. They are intended for your personal safety and for the safety of the people working with you. With this manual, walk around your machine and note the content and location of these warning signs. Review these decals and the operating instructions in the manual with your machine operators.

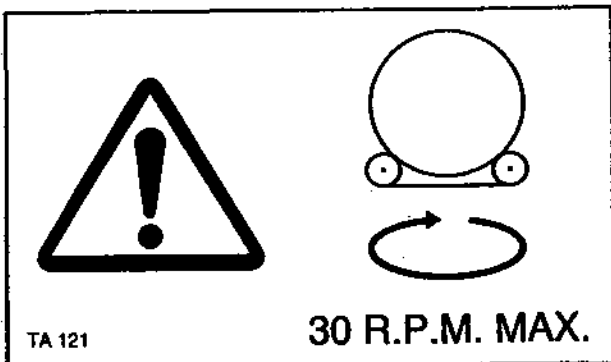
Ensure that these decals are always legible. If they are not, replace them.



WARNING SHARP KNIFE



BEFORE STARTING THE MACHINE READ OPERATORS MANUAL AND SAFETY INSTRUCTIONS



DO NOT EXCEED TURNTABLE SPEED OF 30 R.P.M



DANGER STAND CLEAR

TECHNICAL SPECIFICATIONS

		200SL MODEL (3ptLinkage)
Dimensions		
Total length - Exceeding Bale Mat		208 cm
Width with arm raised		210 cm
Height to top of side (bale guide) rollers		100 cm
Height to top of side arm		210 cm
Weight	With lift arm	900 kgs
Speed of turntable		30/rev/min*
Oil replacement		25 Litres/min (165kp cm2)
Attachment to tractor		Tractor 3pt. Linkage
Bale sizes		120 x 120 cm up to 120 x 153cm max 750 kgs
Film (width of Roll)...		500mm (250S) 750mm(250S7)

* The speed of rotation can be varied to suit various conditions but on no account should it exceed 30 r.p.m. (Speeds in excess of 30 r.p.m. will void warranty).

PRE DELIVERY INSTRUCTIONS

IMPORTANT: DO NOT ATTEMPT TO OPERATE UNTIL THE FOLLOWING INSTRUCTIONS ARE PERFORMED OTHERWISE SERIOUS DAMAGE COULD BE CAUSED.

1. MACHINE ASSEMBLY

For ease of transportation some items are removed from their positions and stored elsewhere on the machine. The control box, film dispenser and cut and start unit are stored under the bale belt. Also stored under belt on remote control machines are the infra red receiver and sender units and warning beacon. The film mast is attached to the front of the machine. On round bale machines only, the top rollers c/w mounting brackets and the plastic end rollers are mounted on temporary brackets beside the bale belt. Road wheels, bale lift arm and bale ramp are transported separately. Remove the above items and assemble as detailed in parts list section of this manual taking particular note of the following points.

(i) DISPENSER MAST

Insert lift mast into socket towards front of machine. Ensure film pull down ram is faced towards the machine. Attach the pull down arm hydraulic ram. Attach the film dispenser to the mast ensuring that the end marked top is faced up. On remote control machines attach the infra-red receiver and warning beacon to top of mast. The film mast height is adjustable. Its height is dependant on bale size and type and is set in the field. It should be set so that centre line of film is in line with centre of bale. See Fig. 1

CUT & START

Attach Cut & Start unit to mounting frame on the left hand side of the machine. It is possible to move the unit along the mounting and fix it to any of three holes. On all round bale wrapping machines the unit is fixed to the centre hole on the mounting frame. Connect electrical supply to unit ensuring that wiring is secure. The cable is stored on the turntable frame near the Cut & Start mounting.

(iii) BALE LIFT ARM

Assemble bale lift arm and attach to mounting points on right hand side of main chassis. Attach hydraulic ram to lift arm; grease pivot pins.

(iv) TOP ROLLERS AND PLASTIC END ROLLERS

Place plastic end rollers in sockets on the back and front of the turntable. On round bale machines only, attach top rollers and mounting brackets to each side of the machine.

(v) ROAD WHEELS (trailed machines only)

Attach road wheels ensuring that nuts are tight and tyre pressure is 50 p.s.i.

(vi) BALE RAMP OR MAT

Attach bale ramp or mat to rear of chassis. Note Round bale trailed models have bale ramps with option hydraulic bale ramp. Linkage mounted machines have bale mats. A standard 1050 trailed models have hydraulic bale ramps.

SEE SEPERATE INSTRUCTION FOR FITTING HYDRAULIC BALE RAMP.

CHECKS TO BE PERFORMED

1. Check that all bolts and nuts are tight.
2. That all lubrication points are greased.
3. Check that all guards are in place.
4. Check all operating and safety stickers are in place.

2. OPERATIONAL TEST

When all above assembly and checks have been carried out the operation of the machine should be checked as follows:

NOTE: IF YOU ARE NOT TOTALLY FAMILIAR WITH THE OPERATION OF THE TANCO CONTROL SYSTEM READ THIS MANUAL IN FULL BEFORE PROCEEDING WITH OPERATIONAL TEST.

1. Attach machine to tractor.
2. Connect hydraulic hoses to D/A service on tractor.
3. Fit controller box inside cab.
4. Connect control box to machine and connect power cable direct to tractor battery. It is important that the leads are connected with the correct polarity. See Fig. 6.
5. Fit cable control actuator socket to convenient position in cab and locate actuators in socket.
6. Lock hydraulic lever in tractor so that oil is flowing through system.
7. Check function by operating control levers.
 - (a) Lift arm up and lift arm down. NOTE ensure lift arm is down before moving to (b).
 - (b) Turntable rotation forward and reverse.
 - (c) Tip up and down checking hoses are o.k.
8. Switch controller on.
9. Switch controller to manual operating mode by operating toggle switch.
10. Check Cut & Start plunger out and in.
11. Switch machine to AUTO mode then run through the Wrapping cycle. See operating instruction section of this manual on how the machine should perform, and if any function fails to operate correctly consult fault finding section of the operators manual.

3. CUSTOMER CHECKS

Before despatching consult customer on the following points:

1. That the machine model suits his requirements.
2. If machine is to be operated on a tractor with a closed centre hydraulic system then a closed centre valve is required, see separate instructions.
3. That the tow hitch type is compatible with the tractor. Three different hitch types are available.

PREPARATION OF A NEW MACHINE

1. Check height of film mast to ensure that centre line of film spool is level with the centre line of the bale on the turntable. This will alter with different bale diameters. If this alignment is not correct more film than necessary will be used. See Fig 1.
2. When connected to John Deere* tractor the value must be converted to closed centre.

HYDRAULIC CONNECTIONS

Connect the feed and return hoses from the Autowrap valve to the tractor's double-acting facility.

NOTE: The return hose is fitted with a non-return valve to protect the Autowrap from damage in the event of incorrect connection to tractor hydraulics.

NOTE* To ensure maximum efficiency and length of life of hydraulic components this machine requires a clean supply of hydraulic oil. IT IS RECOMMENDED THAT THE TRACTOR HYDRAULIC FILTER ELEMENT BE REPLACED AND THEREAFTER MAINTAINED IN ACCORDANCE WITH THE MANUFACTURERS RECOMMENDATIONS.

Bale Wrap Controller:

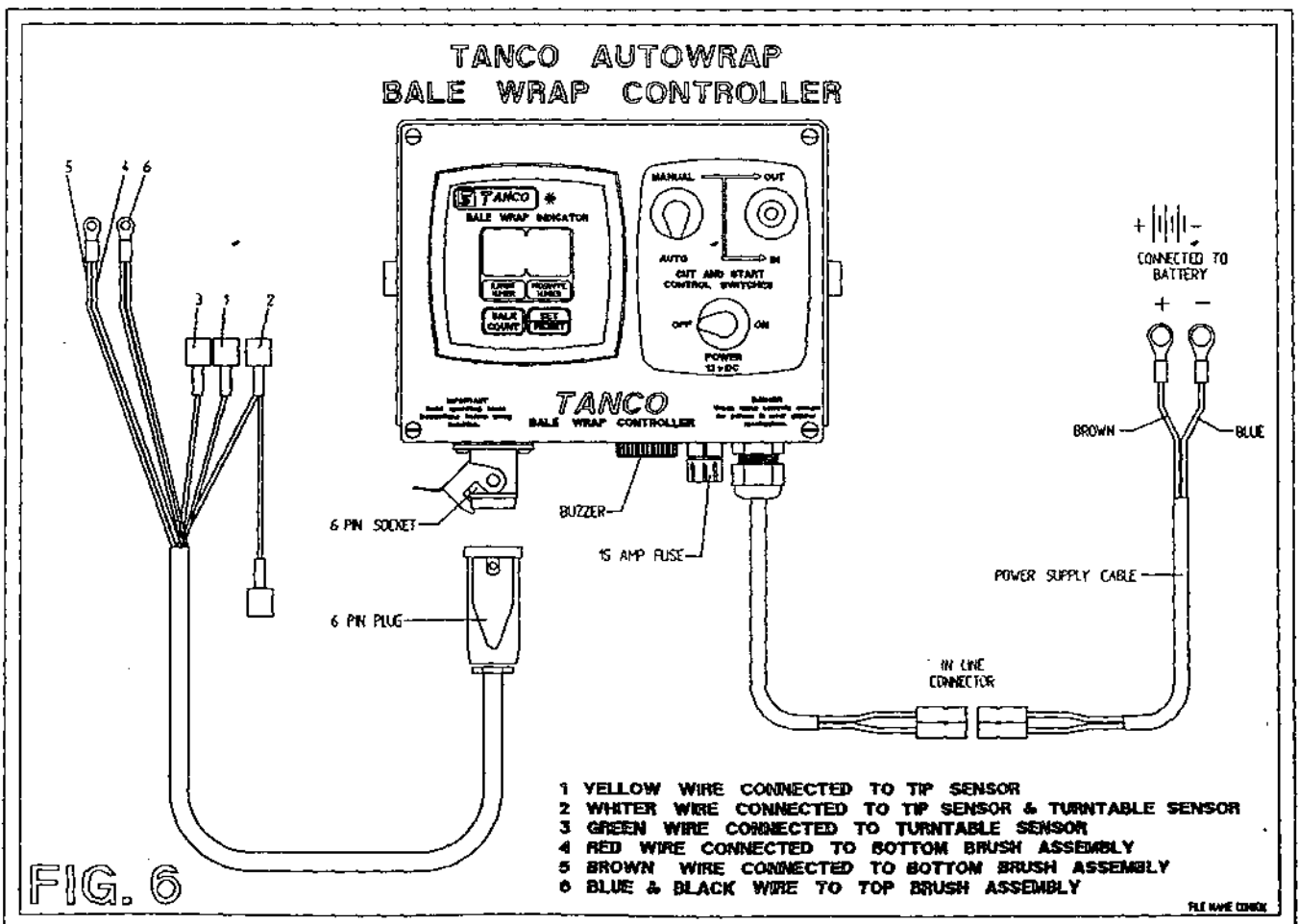
Connect direct to battery as per operating instructions and switch on. The programming of the Automatic Bale Wrap Controller is easily done by following the steps outlined below:

Once the unit is switched on, the number of required turntable revolutions appears on the right hand display. To change this press and hold the "hold to set" button, see fig. 6, then press the "set/reset" button. The first digit of the number will then blink and count from 0-9. Release the "set/reset" button at the required number. By pressing the "set/reset" again the second digit can be changed.

The monitor counts the number of bales per batch and the cumulative total. To see these, press the "bale count" button. The first number to appear is the batch total. If the button is held down for 10 seconds, a line will appear on the display, followed by the cumulative number wrapped. The batch count can be reset to 0 by holding the "bale count" button down and pressing the "set/reset" once. The cumulative total cannot be returned to zero.

To enable you to understand how the controller works, here is a brief resume of its functions.

- (1) After two revolutions of the turntable the actuator pushed open the Cut and Start, this action takes 8.5 secs until the latch engages, then after 6 revolutions of the turntable the actuator closes for a period of 5.5 seconds and stops in the rest position. When the turntable is tipped, the magnet operates the sensor which activates the linear actuator which closes fully and in doing so, trips the latch releasing the gripper arm which slams closed under the spring pressure, cutting the film and, at the same time gripping the film for the next bale



BALE WRAP CONTROLLER FUNCTIONS

The Bale Wrap Controller has a total of seven functions to control.

To access these functions press/hold * button and switch on, then release * button.

A Chevron **V** appears at the left hand side of the display windows:- this may be moved across the display from left to right by repeatedly pressing * button.

The seven chevron positions have specific functions and the time for each function may be set by the two buttons at the bottom of the display screen.

- < > +

Reading from left to right the chevron positions are as follows:

- V** (1) Indicates number of turns to activate motor = 2
- V** (2) Indicates the number of seconds it powers out until the latch engages = 8.5
- V** (3) Indicates the number of revolutions of the turntable before the motor reverses = 9
- V** (4) Indicates the number of seconds required to reverse to the park positions = 5.5
- V** (5) Indicates the number of seconds from the tipping signal until the motor is fully closed = 2.5
- V** (6) Indicates the number of revolutions before the set figure at which the buzzer sounds = 0
- (7) No chevron appears but letter **N** appears. This indicates "Non-Auto Reset" and does not need to be changed. It means that you can go past the preset number of revolutions eg: if set for 22 and you decide to do a few more turns to ensure bale is fully wrapped, you can do so without upsetting the programme.

Note: The act of tipping off the bale completes the programme of functions so if you are demonstrating how the unit works, always finish up by passing a magnet over the trip sensor when you will notice the display return to the preset figure in the right display and to 0 in the left one.

Finally, to lock all functions into the controllers memory, switch power off and back on again.

OPERATING INSTRUCTIONS

1. Fit roll of film following the instructions on the film mast.
2. Pull off enough film to reach the cut and start gripper assembly.
3. Pull the plunger open and attach tag end of film between the gripper jaws.
4. Drop wrapper until skids just touch the ground.
5. Adjust top link until wrapper is level.
6. Lower the loading arm stabiliser skid until it touches the ground and pressure is off safety prop (8) Fig. 4 which should then be removed and stored on spigots on loading arm.
7. Lower loading arm until it just touches ground. Remove safety stay (7) Fig. 4 from storage spigots and refit it to spigot on chassis, ensuring slotted hole is fitted to end of lift ram pivot pin and secure with lynch pins.
8. Locate bale on lift arm, then raise it and gently roll bale onto turntable. Lower arm.
9. Start wrapping, turntable rotating clockwise. Film tension is automatically set so that width of film applied to the bale stays at approx width of 405 - 410mm for 500mm wide film roll and 615 - 620 for 750mm wide film roll.
10. Continue wrapping until signal from bale wrap indicator sounds (required number of revolutions has been reached). Then stop with cut and start unit facing towards front of machine and film aligned with opened gripper section of cut and start.
11. Tip bale from machine. When the machine is almost fully tipped the cut and start unit grips and cuts the film and the bale is then unloaded onto the bale mat.
12. Lower the turntable and rotate anticlockwise through 90 degrees and stop with cut and start opposite to lift arm.
13. Repeat operations 8 - 12 as required.

NOTE: The film need only be attached at the start of a roll, after that, the sequence is automatic.

WARNING; LIFT ARM

The lift arm on this machine is designed to pick up and deposit bales onto the turntable prior to wrapping. It is not intended to be used for transporting bales over distances or for use as a stabiliser whilst wrapping. Therefore any use of the lift arm outside of its primary function will be deemed to be abuse and will void all warranty.

It is not advisable to transport bales on the turntable with the wrapper raised on the tractor linkage.

On completion of wrapping, stop turntable with rollers parallel to loading arm which must then be raised and secured as follows.

- A. Remove safety stay (7) Fig. 4 and relocate on the stabiliser skid.
- B. Raise loading arm fully and relocate safety prop (8) Fig. 4 between loading arm and chassis.
- C. Raise stabiliser skid to park position .

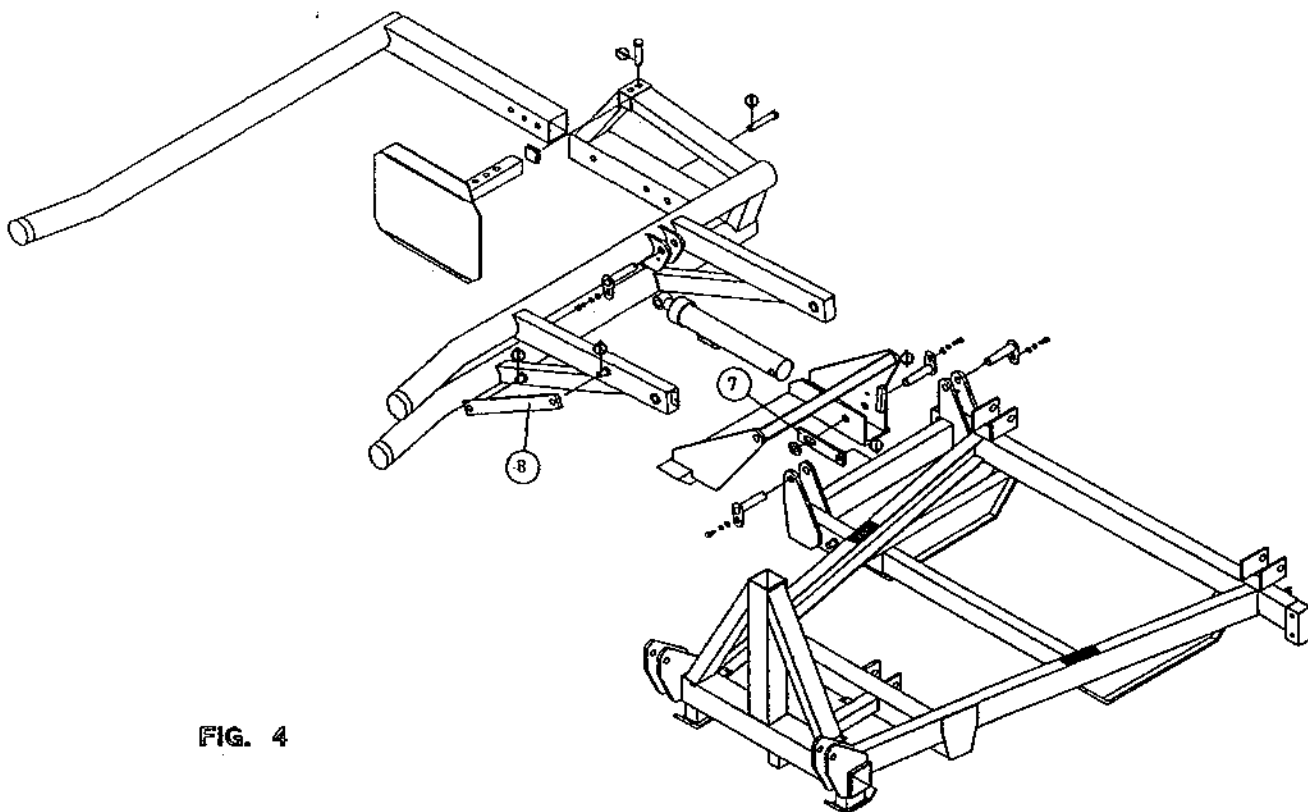


FIG. 4

FILE NAME W063-PL19

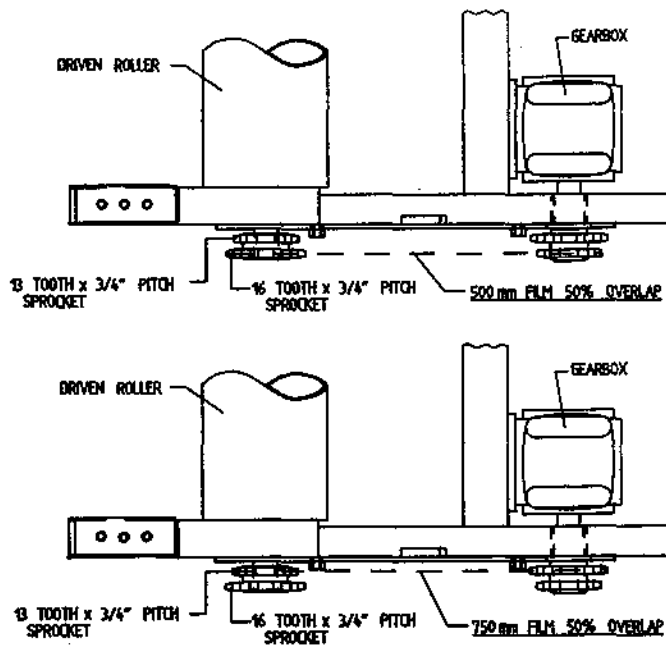
FILM OVERLAP SYSTEM.

The Autowrap is fitted as standard with the 2 x 2 x 50% film overlap system. This is achieved by means of a chain drive which ensures that the correct number of film layers are applied to the bale after a specific number of revolutions of the turntable. The number of revolutions required to wrap a bale depends on width of film being used and bale size - See table below. The chain to be positioned on inner sprockets for 750mm wide film and on outer sprockets for 500mm wide film. See fig. A, Below.

For silage bales we recommend the application of a minimum of our layers of film.

Table 1

Bale Size	Width of Film Roll	Bale Indicator Setting (Revs)
120cm x 120cm	500mm	22
120cm x 120cm	750MM	15
120CM X 120CM	500MM	24
120CM X 120CM	750MM	16
120CM X 150CM	500MM	26
120CM X 150CM	750MM	18



FIA A

IMPORTANT

The above recommendations are only offered as a guide to correct wrapping of silage bales and the manufactures accept no responsibility for variations that may arise and the consequence of same. They are based upon turntable speeds of up to 25 r.p.m., and a approx film width of 400mm applied to end of Bale when using 500mm wide film roll or a approx film width of 600mm applied to end bale when using 750mm wide film roll.

It is the responsibilitiy of the operator to ensure the correct number of wraps are applied, as variances can occur with fluctuations in speed of rotation, film quality and tensioning, shape and density of bale etc.

SERVICE AND MAINTENANCE

1. All nuts and bolts should be tightened after some hours in use and thereafter regularly.
2. Wheel pressure should be normally kept at 50 psi depending on bale weight and field conditions.
3. Inspect moving parts for wear on daily basis.
4. Lubrication.

Drive chain & sprocket	- grease every 24 hours.
End rollers	- grease every 24 hours.
Main rollers	- grease every 24 hours.
Hinge pins on Lift arm	- grease every 24 hours.
Hinge pins on main tip frame	- grease every 24 hours.
Hydraulic rams	- grease every 24 hours.
Wheel bearings	- grease every 24 hours.
Film reel assy.	- grease every 24 hours.
Dispenser gearboxes	- grease sparingly each month.
Main spindle	- grease every 4000 - 5000 bales.
Gearbox oil level	- Check every 4000 - 5000 bales.
5. Adjustments

Turntable Drive chain	: Adjust after first days work then check/adjust every 50 hours. See Fig. 8.
Gearbox Drive chain	: Adjust after first days work then tension check/adjust every 50 hours. See Fig. 2.
Roller Drive Chain	: Adjust after first days work then check/adjust every 50 hours. See Fig. 3.
Main conveyer belt	: See Belt tracking instructions.
6. Film Dispenser

Fit with marked gearbox at top
Apply one shot of EPO Type Grease
Wash rollers often to avoid build up of Tack from film using petrol.
Follow Film threading diagram. See Fig 1.
7. Film Adjustment

Centre of film roll must be in line with centre of bale and film mast should be vertical.

8. Shear Pins

There are two shear pins fitted to sprocket assembly on drive roller see fig 5. If the pins shear, remove the broken pins re-align holes and fit two replacement spiral pins, 6mm dia x 20mm long, Din 7343. There are two spare shear pins attached to inside of chain guard.

NOTE: If shear pins are replaced with other than specified above all warranty is null and void.

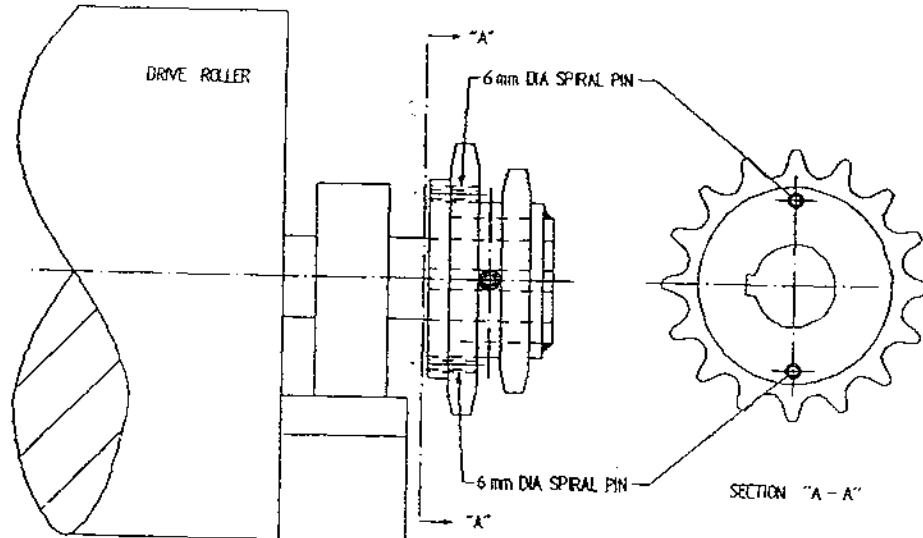
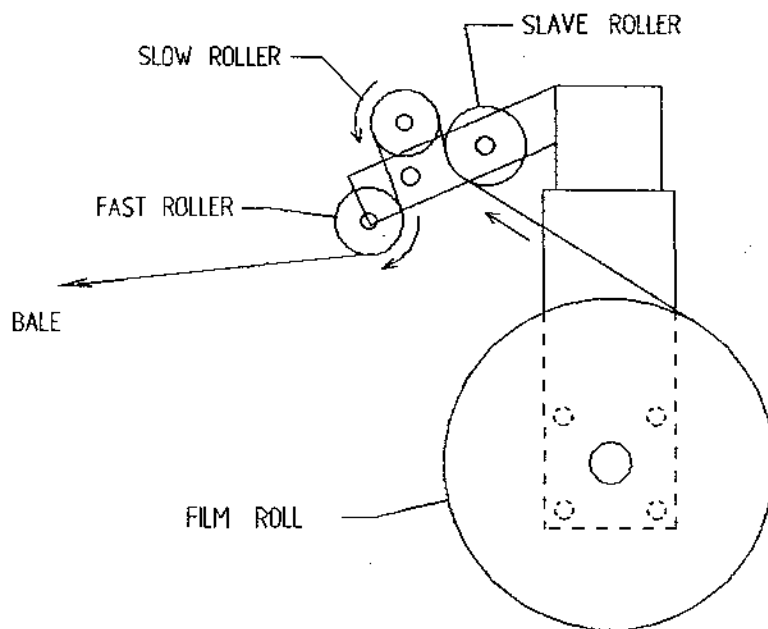


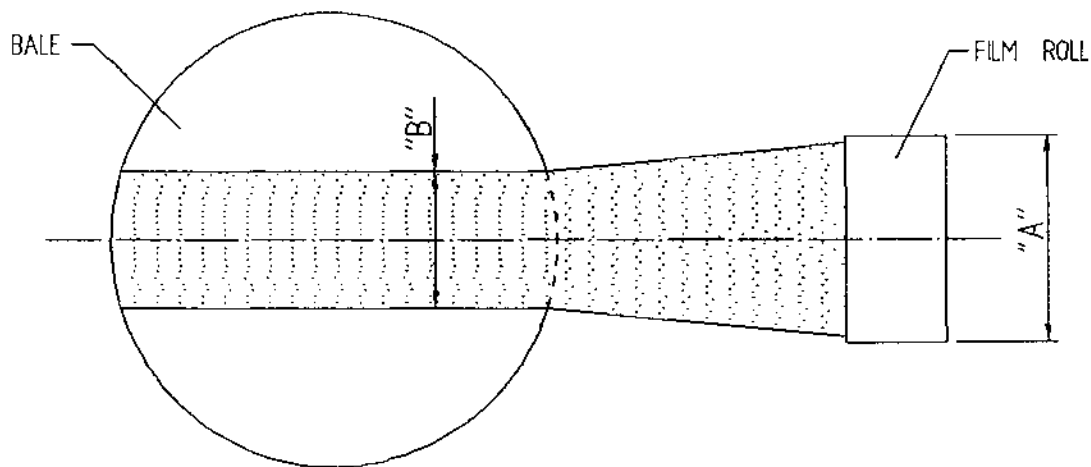
FIG. 5

TANCO AUTOWRAP FILM THREADING DIAGRAM



FILM ADJUSTMENT

CENTRE OF FILM ROLL MUST BE IN LINE WITH CENTRE OF BALE AND FILM MAST SHOULD BE VERTICAL.



FILM ROLL WIDTH "A"	FILM WIDTH ON END OF BALE "B"
500 mm	400 mm
750 mm	600 mm

Fig. 1

FILE NAME W060-LA21

TANCO AUTOWRAP CONSTANT INDEXING
GEARBOX CHAIN DRIVE TENSIONING SYSTEM (1995)

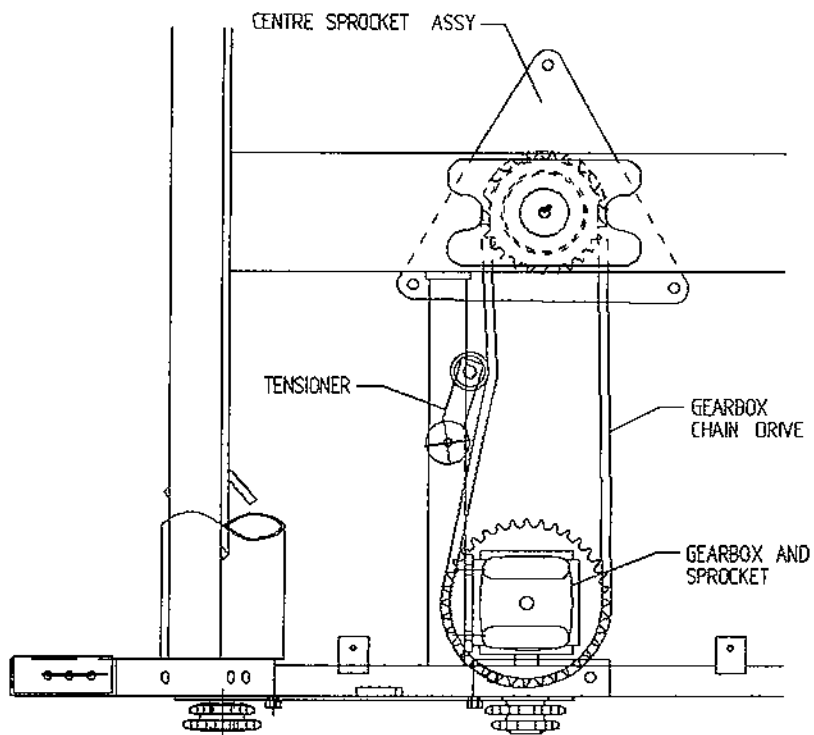
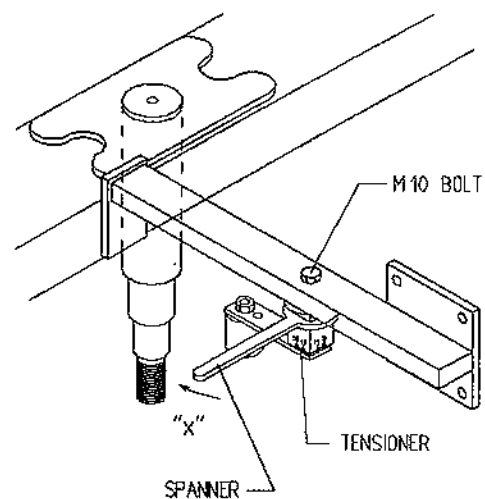


Fig. 2

CHAIN TENSIONING PROCEDURE

1. LOOSEN M10 BOLT SECURING CHAIN TENSIONER.
2. TENSION CHAIN BY ADJUSTING TENSIONER USING SPANNER IN DIRECTION OF ARROW "X" UNTIL SETTING OF 15'-20" IS REACHED.
3. RE-TIGHTEN M10 BOLT TO SECURE TENSIONER IN POSITION.



ROLLER CHAIN DRIVE TENSIONING SYSTEM

CHAIN TENSIONING PROCEDURE

1. LOOSEN M10 BOLT SECURING CHAIN TENSIONER.
2. TENSION CHAIN BY MOVING CHAIN TENSIONER OUTWARDS IN SLOT.
3. RE-TIGHTEN M10 BOLT TO SECURE TENSIONER IN POSITION.

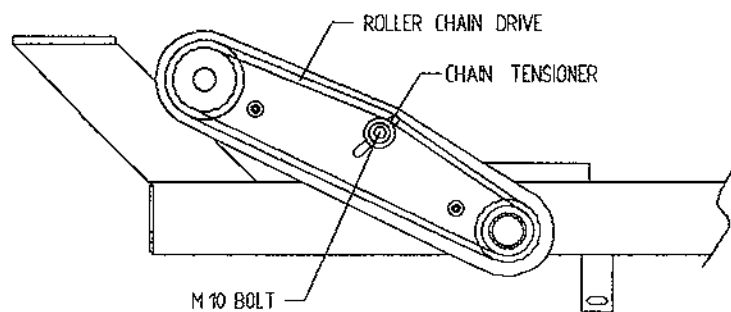


Fig. 3

TANCO AUTOWRAP 1995 MODEL TURNTABLE CHAIN DRIVE TENSIONING SYSTEM

TENSIONING PROCEDURE

1. TIP UP MACHINE AND SUPPORT WITH A PROP.
2. SLACKEN M12 CLAMPING BOLTS SLIGHTLY.
3. SLACKEN LOCKNUT A.
4. ADJUST NUT B UNTIL THERE IS 8mm - 10mm DEFLECTION ON CHAIN.

NOTE WARNING:
DO NOT OVER TENSION CHAIN AS MOTOR WILL BE DAMAGED

5. TIGHTEN LOCKNUT A.
6. TIGHTEN M12 CLAMPING BOLTS.

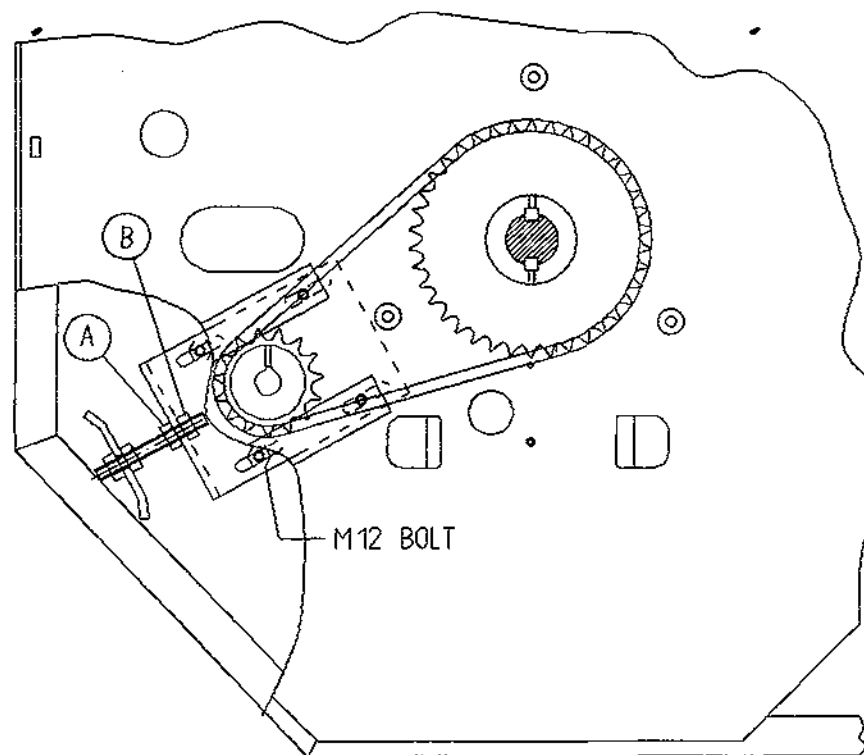


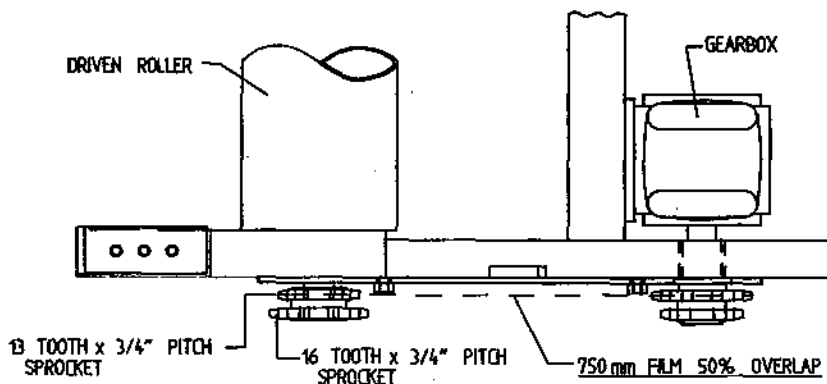
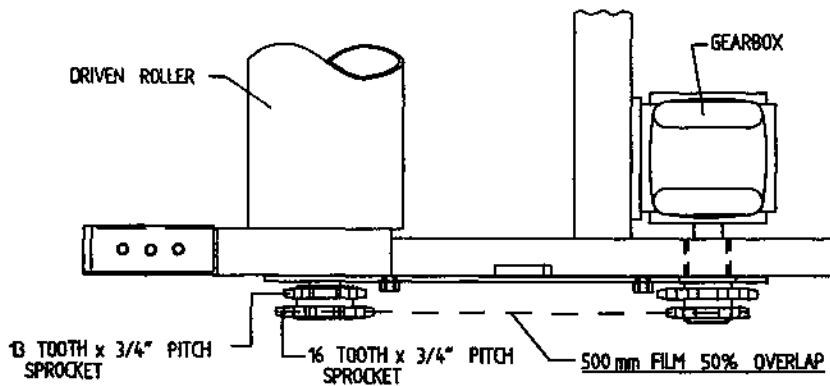
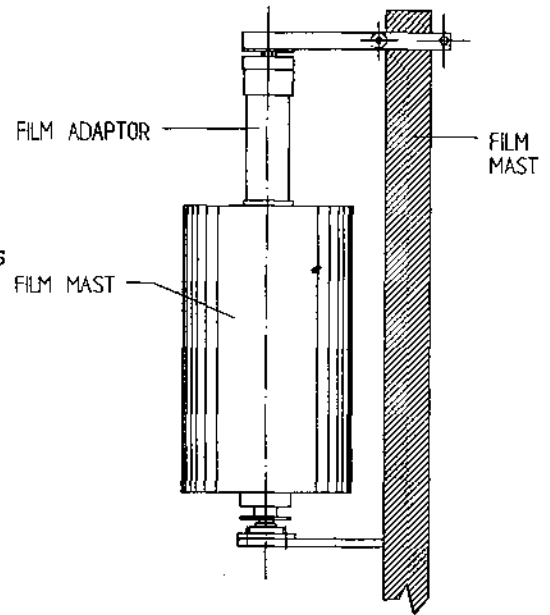
Fig. 8

FILM ADAPTOR

OPERATING INSTRUCTION

500mm wide film rolls are used as standard on 250, 350, & 450 autowrap Models while 750mm wide film rolls are used as standard on 550 model. If however, it is found necessary to use 500mm wide rolls along with 750mm film dispenser the following instructions must be adhered to: (NOTE: Failure to do so will result in inadequate wrapping and bale spoilage).

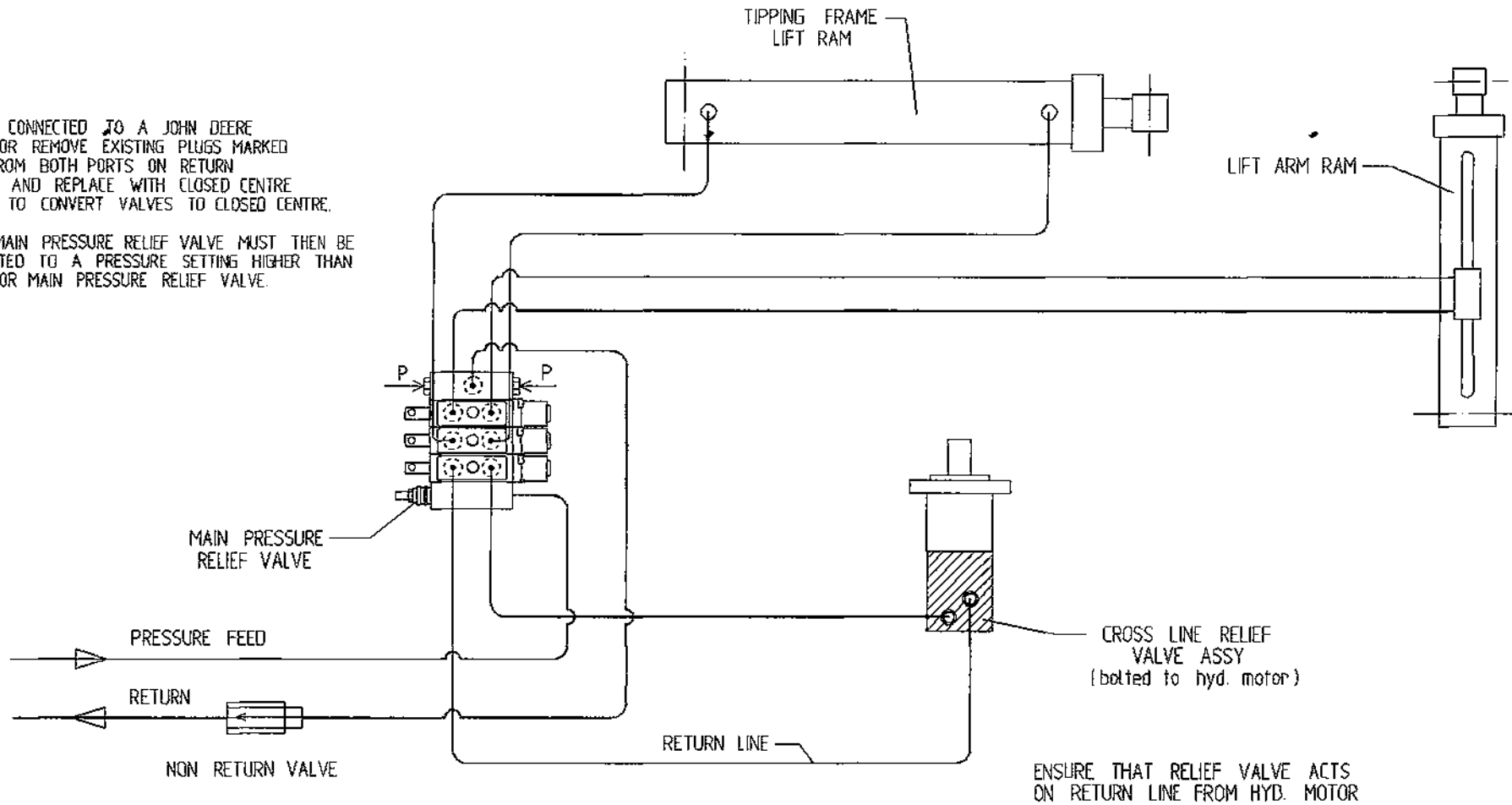
1. Fit film adaptor to top end of 500mm wide film roll as shown opposite.
2. Remove drive chain from inner set of sprockets and fit to outer set of sprockets as shown in Fig. below.
3. Re-tension chain.
4. Adjust height of film mast so that centre of film roll is in line with centre of bale on the turntable.
5. Adjust bale wrap indicator setting from 15 to 22 revolutions for 120cm x 120cm blaes. (See page for guide to bale wrap indicator settings. See Table 1).



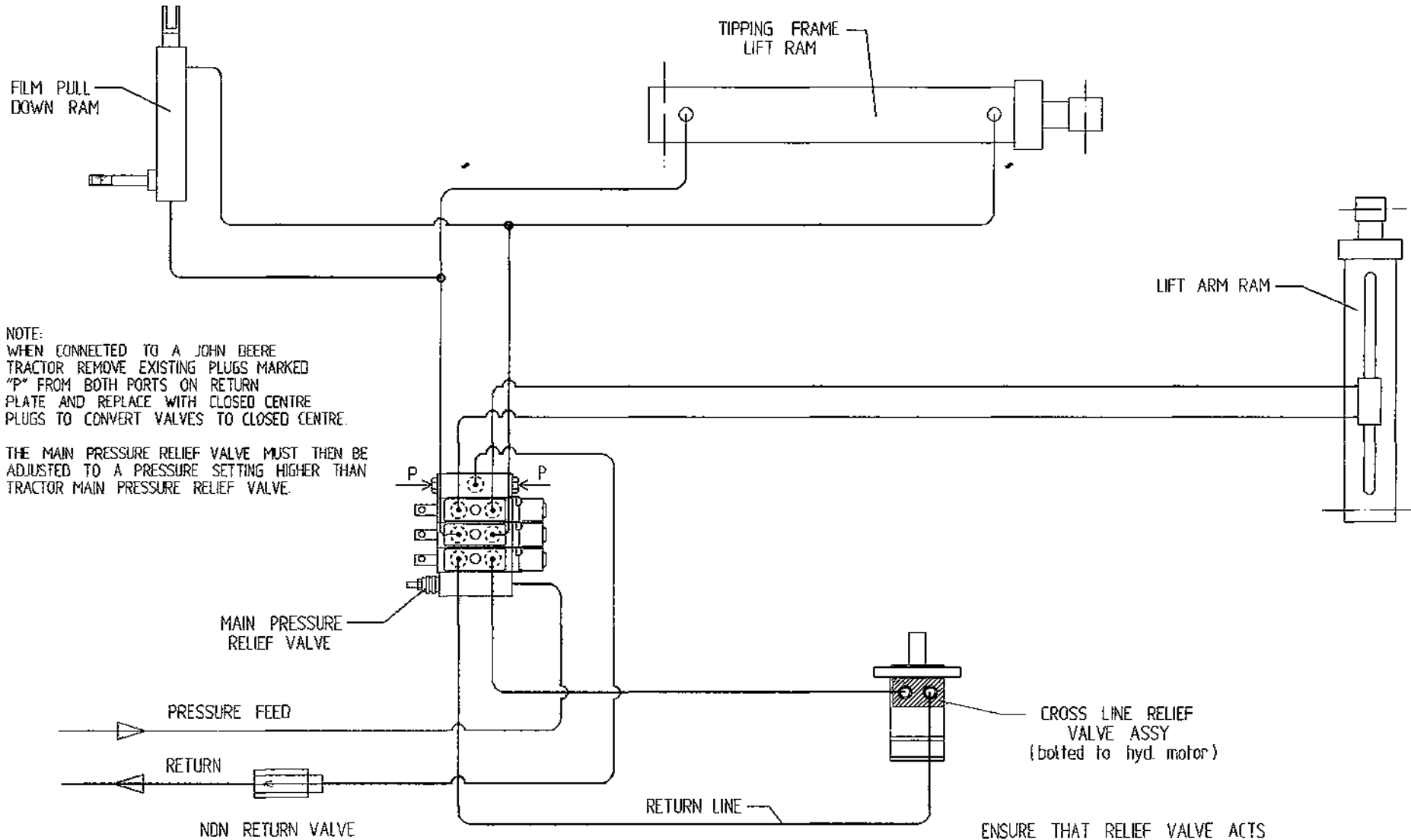
TANCO AUTOWRAP 250 SL MODEL 1995 HYDRAULIC CIRCUIT DIAGRAM

NOTE:
WHEN CONNECTED TO A JOHN DEERE
TRACTOR REMOVE EXISTING PLUGS MARKED
"P" FROM BOTH PORTS ON RETURN
PLATE AND REPLACE WITH CLOSED CENTRE
PLUGS TO CONVERT VALVES TO CLOSED CENTRE.

THE MAIN PRESSURE RELIEF VALVE MUST THEN BE
ADJUSTED TO A PRESSURE SETTING HIGHER THAN
TRACTOR MAIN PRESSURE RELIEF VALVE.



TANCO AUTOWRAP 250 SL7 MODEL 1995 HYDRAULIC CIRCUIT DIAGRAM



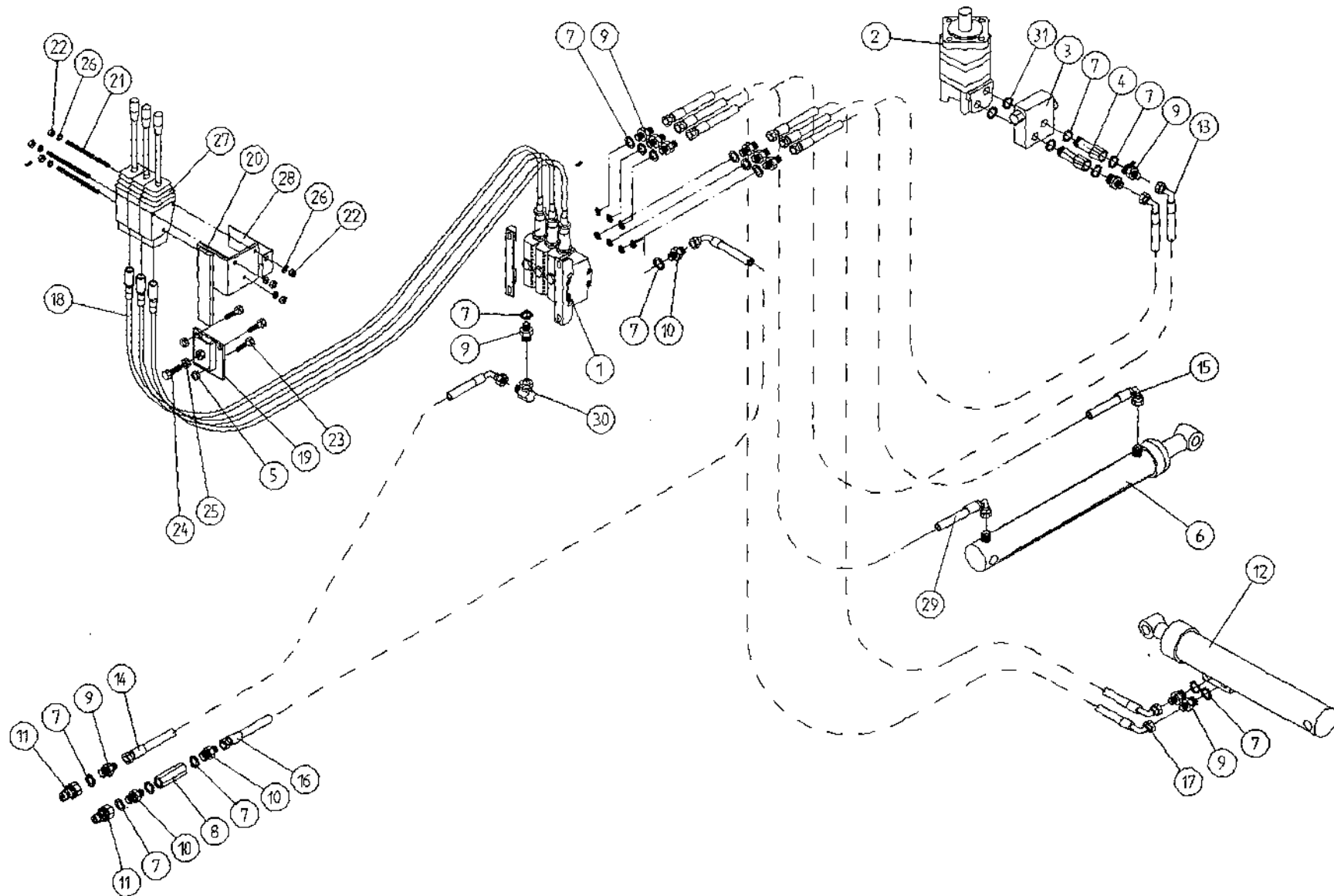
NOTE:
WHEN CONNECTED TO A JOHN DEERE
TRACTOR REMOVE EXISTING PLUGS MARKED
"P" FROM BOTH PORTS ON RETURN
PLATE AND REPLACE WITH CLOSED CENTRE
PLUGS TO CONVERT VALVES TO CLOSED CENTRE.

THE MAIN PRESSURE RELIEF VALVE MUST THEN BE
ADJUSTED TO A PRESSURE SETTING HIGHER THAN
TRACTOR MAIN PRESSURE RELIEF VALVE.

ENSURE THAT RELIEF VALVE ACTS
ON RETURN LINE FROM HYD. MOTOR

FILE NAME WD64-PL2

TANCO AUTOWRAP 250 SL MODEL (3pt LINKAGE) 1995
 HYDRAULIC COMPONENTS



27

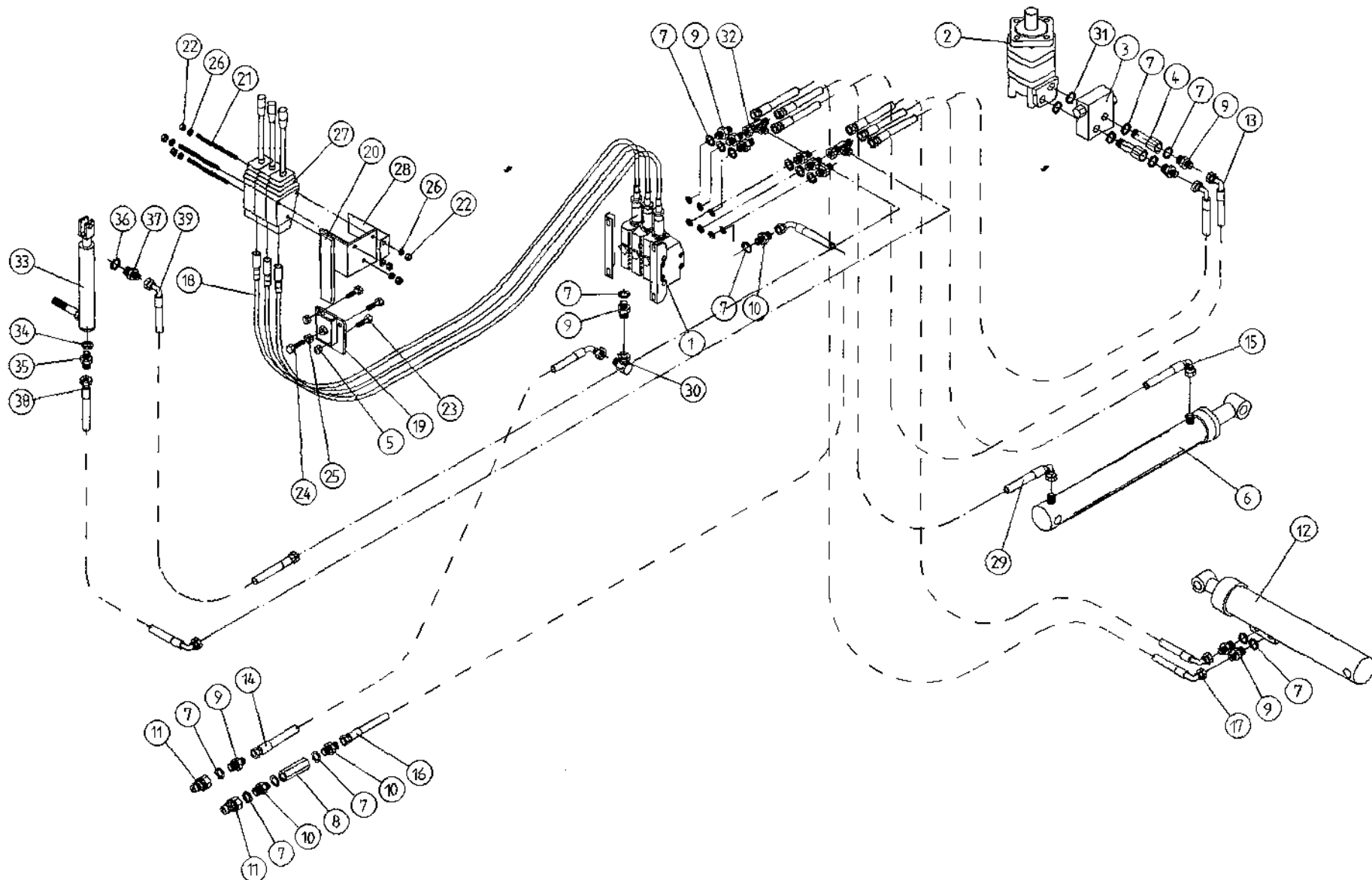
WD64-PL45

**TANCO AUTOWRAP 250SL MODEL (3PT. LINKAGE) 1995
HYDRAULIC COMPONENTS (DIN)**

PARTS LIST

ITEM NO.	DESCRIPTION	QTY.	PART-NO.
1.	3 BANK SPOOL VALVE (DIN)	1	Z01-03-018D
2.	HYDRAULIC MOTOR (C.L.)	1	Z01-02-RF200
3.	CROSS LINE RELIEF VALVE	1	Z01-03-004
4.	1/2" BSP BOTTOM BANJO BOLT (SPECIAL)	2	Z01-03-002B
5.	M10 LOCKNUTS	3	Z23-10
6.	HYD. RAM (FOR TIPPING FRAME)	1	Z01-01-AR687
7.	1/2" DOWTY WASHER	18	Z01-04-03
8.	1/2" NON RETURN VALVE	1	Z01-03-017
9.	1/2" x 3/8" ADAPTOR	12	Z01-06-06-08
10.	1/2" x 1/2" ADAPTOR	3	Z01-06-08-08
11.	1/2" MALE END Q/R COUPLING	2	Z01-15-081
12.	HYD. RAM (FOR LIFT ARM)	1	Z01-01-AW200
13.	120" ST/90 3/8" D/W HOSE	2	Z38-R2-120-S9
14.	84" ST/90 3/8" D/W HOSE	1	Z38-R2-84-S9
15.	36" ST/90 3/8" D/W HOSE	1	Z38-R2-36-S9
16.	84" ST/90 1/2" S/W HOSE	1	Z12-R2-84-S9
17.	84" ST/90 3/8" D/W HOSE	2	Z38-R2-84-S9
18.	2 1/2" METER ACTUATOR CABLES ^{3/2 m?}	3	Z004-03-004
19.	ACTUATOR MTG. BRACKET BOTTOM HALF	1	WD65-AML
20.	ACTUATOR MTG. BRACKET TOP HALF	1	WD65-AMU
21.	TIE BOLT (M8 x 150mm LONG)	3	WSB150
22.	M8 HEX NUT	6	Z18-08
23.	M10 HEX HD SETS x 40mm LONG	3	Z26-064S
24.	M12 HEX HD SET x 30mm LONG	1	Z26-082S
25.	M12 HEX NUT	1	Z18-12
26.	8mm DIA SPRING WASHER	6	Z12-02-08
27.	ACTUATOR LEVERS	3	Z004-03-009
28.	STICKER MOUNTING PLATE	1	WD60-794
29.	36" ST/90 3/8" D/W HOSE	1	Z38-R2-18-S9
30.	3/8" FEMALE x 3/8" MALE 90 DEGREE ELBOW	1	Z01-14-015
31.	COPPER WASHER	2	Z01-04-15

TANCO AUTOWRAP 250 SL7 MODEL (3pt LINKAGE) 1995
HYDRAULIC COMPONENTS



28

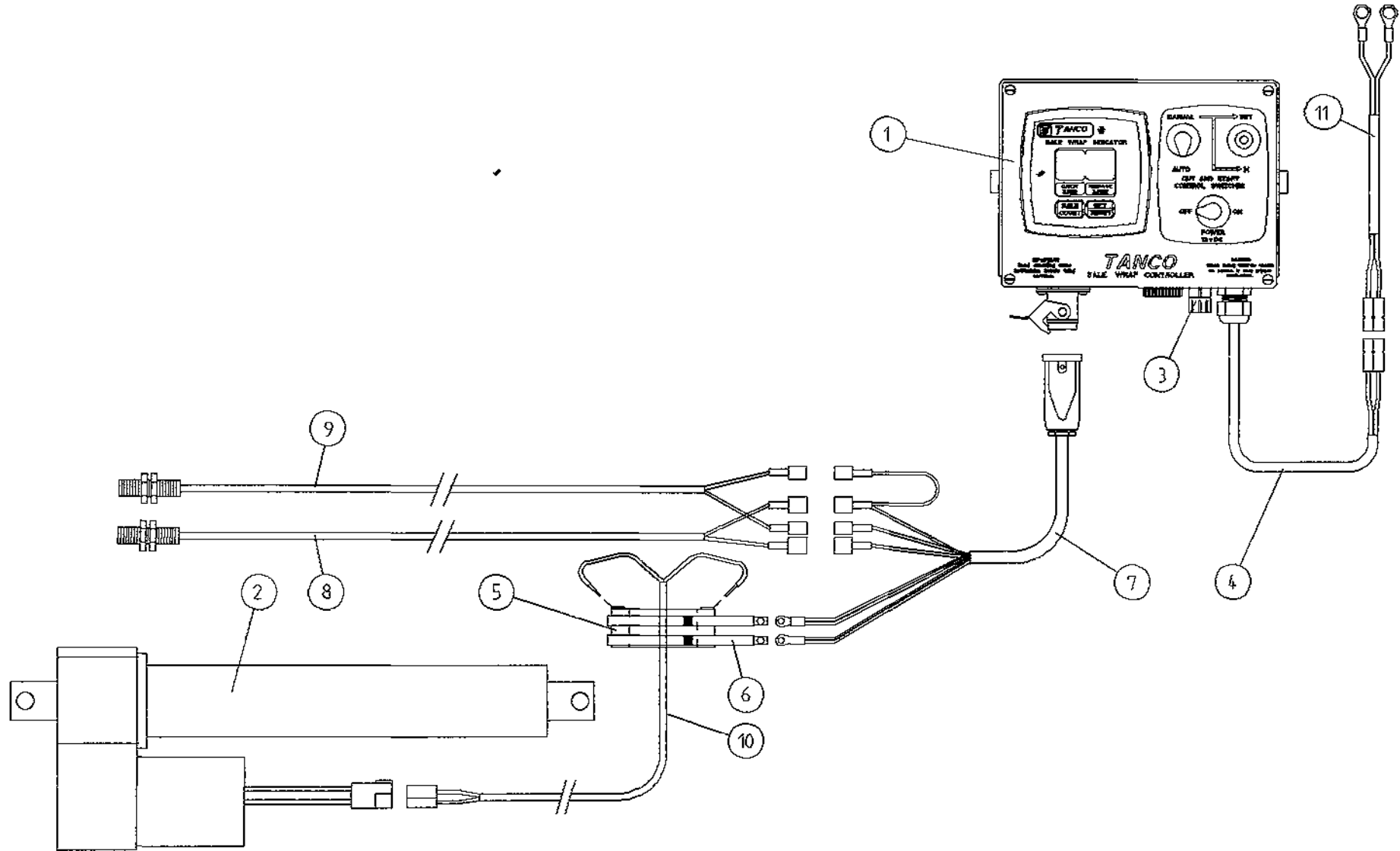
WD64-PL47

**TANCO AUTOWRAP 250SL7 MODEL (3PT. LINKAGE) 1995
HYDRAULIC COMPONENTS (DIN)**

PARTS LIST

ITEM NO.	DESCRIPTION	QTY.	PART-NO.
1.	3 BANK SPOOL VALVE (DIN)	1	Z01-03-018D
2.	HYDRAULIC MOTOR (C.L.)	1	Z01-02-RF200
3.	CROSS LINE RELIEF VALVE	1	Z01-03-004
4.	1/2" BSP BOTTOM BANJO BOLT (SPECIAL)	2	Z01-03-002B
5.	M10 LOCKNUTS	3	Z23-10
6.	HYD. RAM (FOR TIPPING FRAME)	1	Z01-01-AR687
7.	1/2" DOWTY WASHER	18	Z01-04-03
8.	1/2" NON RETURN VALVE	1	Z01-03-017
9.	1/2" x 3/8" ADAPTOR	12	Z01-06-06-08
10.	1/2" x 1/2" ADAPTOR	3	Z01-06-08-08
11.	1/2" MALE END Q/R COUPLING	2	Z01-15-081
12.	HYD. RAM (FOR LIFT ARM)	1	Z01-01-AW200
13.	120" ST/90 3/8" D/W HOSE	2	Z38-R2-120-S9
14.	84" ST/90 3/8" D/W HOSE	1	Z38-R2-84-S9
15.	36" ST/90 3/8" D/W HOSE	1	Z38-R2-36-S9
16.	84" ST/90 1/2" S/W HOSE	1	Z12-R2-84-S9
17.	84" ST/90 3/8" D/W HOSE	2	Z38-R2-84-S9
18.	2 1/2" METER ACTUATOR CABLES	3	Z004-03-004
19.	ACTUATOR MTG. BRACKET BOTTOM HALF	1	WD65-AML
20.	ACTUATOR MTG. BRACKET TOP HALF	1	WD65-AMU
21.	TIE BOLT (M8 x 150mm LONG)	3	WSB150
22.	M8 HEX NUT	6	Z18-08
23.	M10 HEX HD SETS x 40mm LONG	3	Z26-064S
24.	M12 HEX HD SET x 30mm LONG	1	Z26-082S
25.	M12 HEX NUT	1	Z18-12
26.	8mm DIA SPRING WASHER	6	Z12-02-08
27.	ACTUATOR LEVERS	3	Z004-03-009
28.	STICKER MOUNTING PLATE	1	WD60-794
29.	36" ST/90 3/8" D/W HOSE	1	Z38-R2-18-S9
30.	3/8" FEMALE x 3/8" MALE 90 DEGREE ELBOW	1	Z01-14-015
31.	COPPER WASHER	2	Z01-04-15
32.	3/8" FEMALE X 3/8" MALE/MALE "T" PIECE	2	
33.	HYDRAULIC RAM D/A	1	Z01-01-AW25
34.	3/8" DOWTY WASHER	1	Z01-04-02
35.	3/8" X 3/8" ADAPTOR FITTED WITH 0.06" RESTRICTOR	1	Z01-03-04
36.	1/4" DOWTY WASHER	1	Z01-04-01
37.	1/4" X 3/8" ADAPTOR	1	Z01-06-04-06
38.	48" ST/90 3/8" D/W HOSE	1	Z38-R2-48-S9
39.	72" ST/90 3/8" D/W HOSE	1	Z38-R2-72-S9

TANCO AUTOWRAP 250SL/450S/550S/1050S/1250S MODELS ELECTRICAL COMPONENTS



9227R

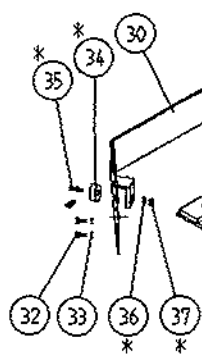
TANCO AUTOWRAP 250SL/450S/550S/1050S/1250S

ELECTRICAL COMPONENTS
PARTS LIST

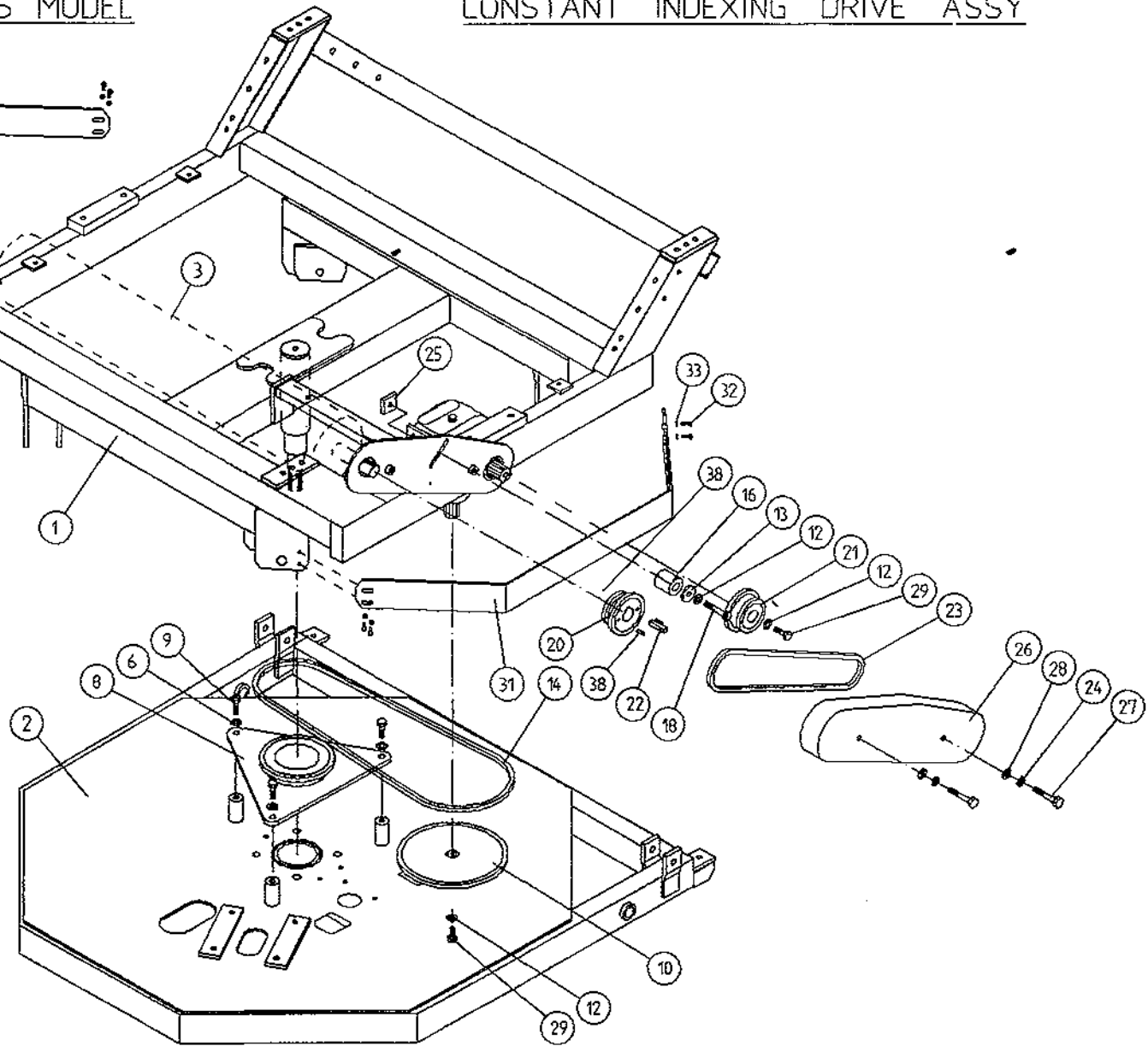
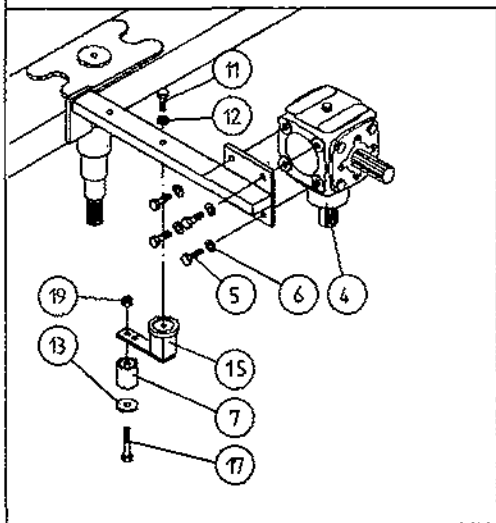
ITEM NO.	DESCRIPTION	QTY	PART-NO
1.	CONTROL BOX	1	D6049
2.	WARNER LINEAR ACTUATOR	1	ZD605-510
3.	1 1/4" FUSE HOLDER	1	ZD606-100
4.	MAIN FLY LEAD FOR CONTROLLER	1	ZD606-060
5.	SLIP RING ASSY.	1	ZD605-308
6.	BRUSHES	2	ZD605-302
7.	7 CORE CABLE C/W HEARTING PLUG	1	D605-7C
8.	ROTATING SENSOR	1	ZD606-RS
9.	TIP SENSOR	1	ZD606-TS
10.	TWO CORE CABLE FOR SLIP RING	1	D605-02C
11	MAIN BATTERY LEAD FOR CONTROLLER	1	ZD606-030

TANCO AUTOWRAP 1995 MODEL

CONSTANT INDEXING DRIVE ASSY



NOTE: ITEMS MARKED WITH * DENOTES ITEMS
REQUIRED FOR AUTOMATIC MODELS ONLY.



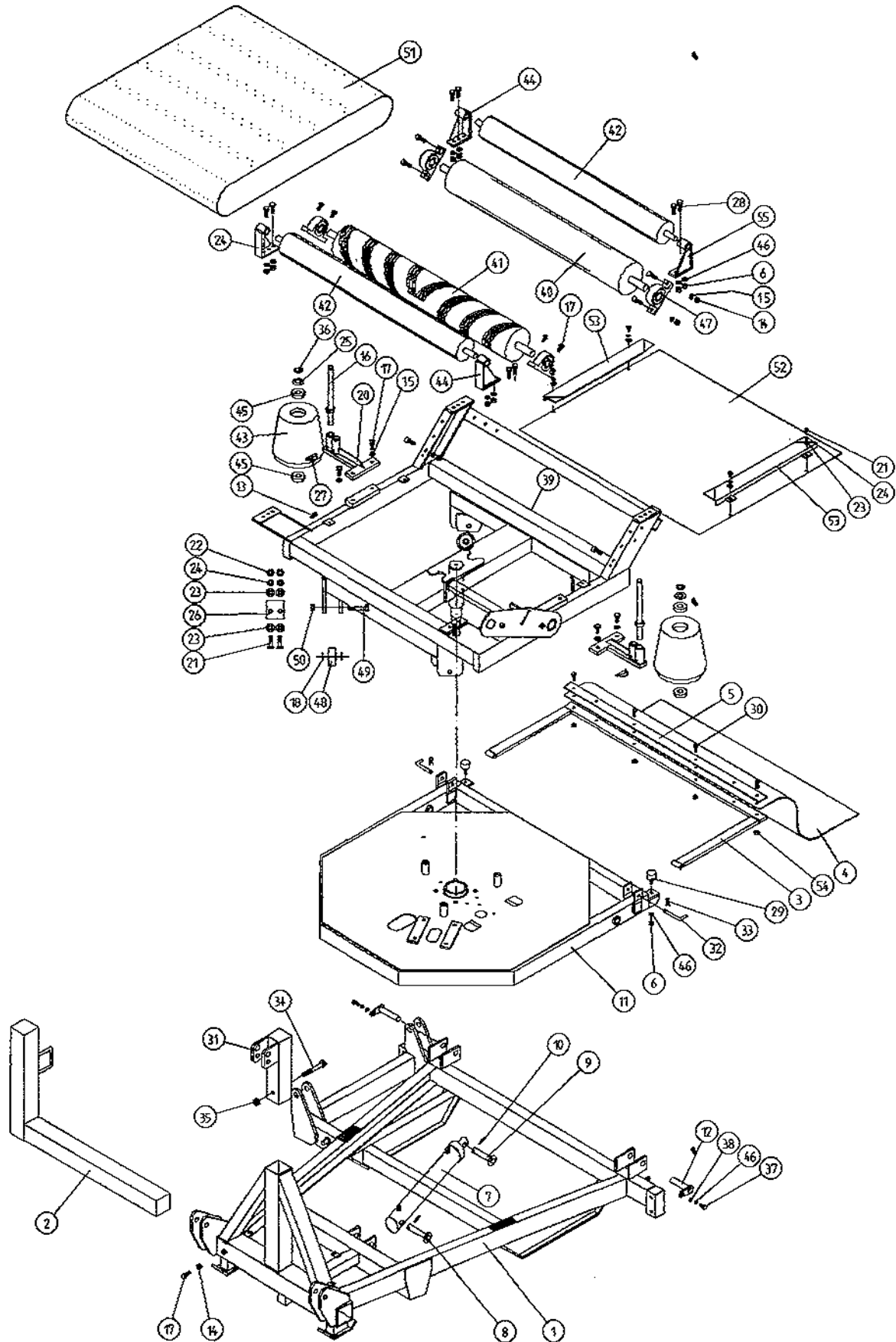
TANCO AUTOWRAP
CONSTANT INDEXING DRIVE ASSEMBLY

PARTS LIST

ITEM NO.	DESCRIPTION	QTY.	PART-NO
1	TURNTABLE ASSY.	1	WD64-TA
2	TIPPING FRAME ASSY.	1	WD64-TF
3	DRIVE ROLLER ASSY.	1	WD658-BRD
4	GEAR BOX	1	Z01-25-300
5	M12 HEX HD SET x 30mm LONG	4	Z26-082S
6	12mm DIA SPRING WASHER	7	Z12-02-12
7	CHAIN TENSIONER	1	WD60-CT
8	CENTRE SPROCKET ASSY 27 TOOTH	1	WD64-CSA
9	M12 HEX HD SET x 25mm LONG	3	Z26-081S
10	36 TOOTH SPROCKET	1	Z06-D64-468
11	M10 HEX HD SET x 25mm LONG	1	Z26-0611S
12	10mm DIA SPRING WASHER	4	Z12-02-10
13	RETAINING COLLAR	3	WD623-071
14	CHAIN 3/4" PITCH X 87 PITCHES	1	Z09-AW-5
15	ROSTA TENSIONING UNIT ARM	1	Z06-454
16	CHAIN TENSIONER	1	WD65-CT
17	M10 HEX HD BOLT x 65MM LONG	1	Z26-0671B
18	M10 HEX HD BOLT x 80MM LONG	1	Z26-0691B
19	M10 LOCKNUT	1	Z23-10
20	SPROCKET DOUBLE SIMPLEX 13T/16T KEYED	1	Z06-D64-1316K
21	SPROCKET DOUBLE SIMPLEX 13T/16T SPLINED	1	Z06-D65-1316S
22	KEY 5/16" x 5/16" x 32mm LONG	1	WD623-K32
23	CHAIN 3/4" PITCH X 62 PITCHES	1	Z09-AW-3
24	1/2" DIA STAR WASHER	2	Z10-01-121
25	LOCKING FLAT	1	WD623-060
26	CHAIN GUARD	1	WD60-CGC
27	M10 HEX HD SET x 70mm LONG	2	Z26-068B
28	10mm DIA FLAT WASHER	2	Z10-02-10
29	M10 HEX HD SET x 30mm LONG	2	Z26-062S
30	GUARD	1	WD64-TG
31	GUARD	1	WD64-020
32	M8 HEX HD SETS X 20MM LONG	8	Z26-020S
33	8MM DIA SPRING WASHER	8	Z12-02-08
34*	MAGNET	2	D6043
35*	M6 CSK HD SET X 35MM LONG	2	Z13-132
36*	6MM DIA FLAT WASHER	2	Z11-02-06
37*	M6 LOCKNUT	2	Z23-06
38	SPIRAL PIN	2	Z03-23-062

* DENOTE ADDITIONAL ITEMS REQUIRED FOR AUTOMATIC MACHINES

TANCO AUTOWRAP 250 SL MODEL 1995

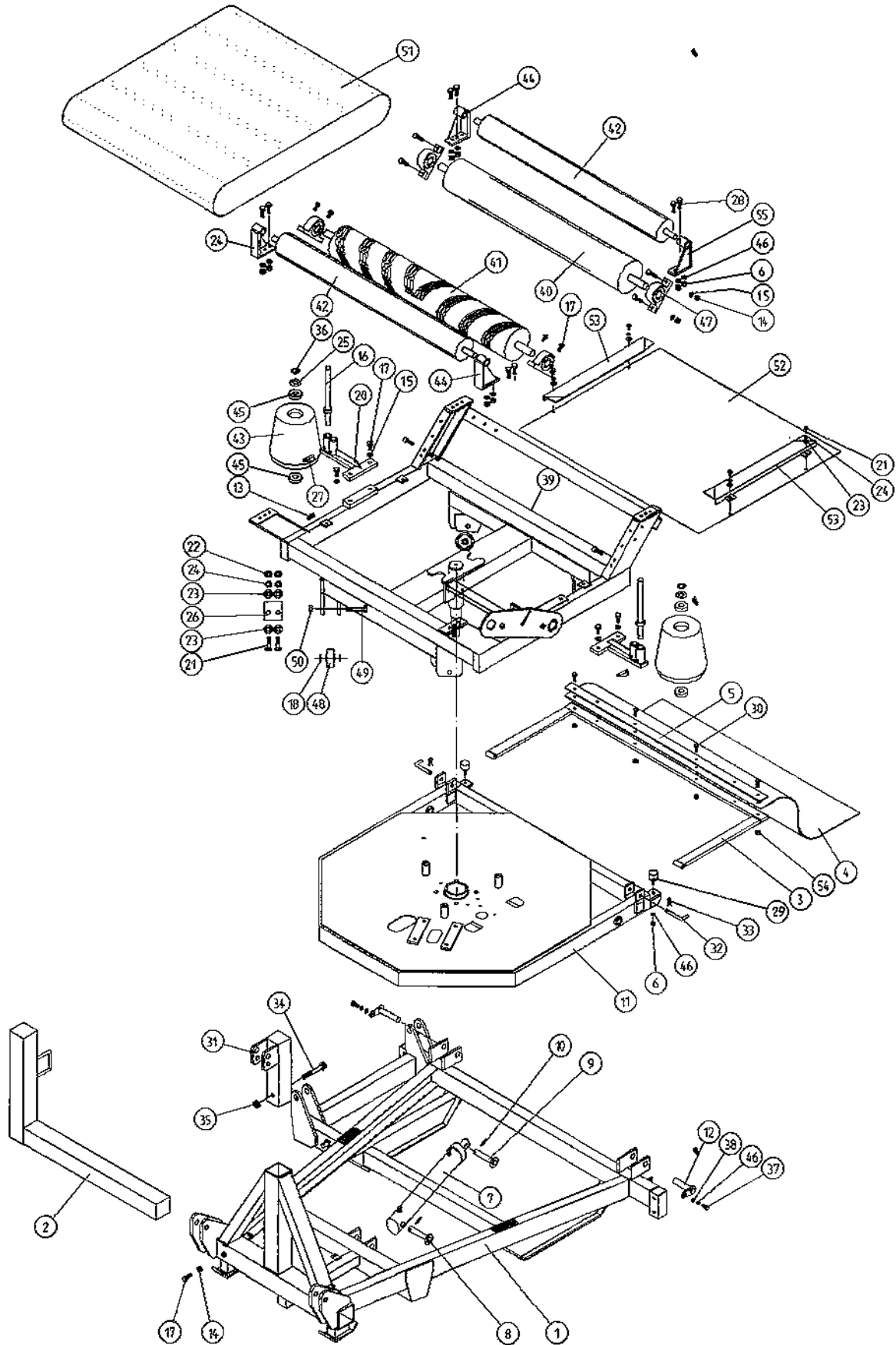


**TANCO AUTOWRAP 250 SL MODEL (3PT. LINKAGE) 1995
MAIN ASSEMBLY**

PARTS LIST

ITEM NO.	DESCRIPTION	QTY.	PART-NO.
1	3PT.LINKAGE FRAME ASSEMBLY	1	WD63-MFSL
2	DISPENSER BRACKET LOWER SUPPORT	1	WD63-DMLH
3	RUBBER MAT MOUNTING FRAME ASSEMBLY	1	WD63-MMF
4	RUBBER MAT	1	Z05-02AM
5	CLAMPING PLATE	1	WD63-1300
6	M10 HEX NUT	14	Z18-10
7	HYD. RAM	1	Z01-01-AR687
8	RAM BOTTOM PIVOT	1	Z03-02-330
9	RAM TOP PIVOT PIN	1	Z03-03-50
10	2" X 1/4" SPLIT PIN	2	Z03-21-29
11	TIPPING FRAME ASSY.	1	WD60-TFC
12	TIPPING FRAME PIVOT PIN C/W GREASE NIPPLE	2	Z03-01-905 Z39-60
13	M10 HEX HD SET X 30mm LONG	9	Z26-062S
14	M12 HEX NUT	4	Z18-12
15	12mm DIA SPRING WASHER	12	Z12-02-12
16	ROLLER SHAFT ASSEMBLY	2	WD60-RSA
17	M12 HEX HD. SETS X 40mm LONG	12	Z26-084S
18	SPACER	8	WD60-198
19	1/8" B.S.P. ST GREASE NIPPLE	4	Z39-60
20	END ROLLER MOUNTING BRACKET	2	WD60-ERM
21	M8 HEX HD BOLT X 20mm LONG	4	Z26-039S
22	M8 HEX NUTS	14	Z18-08
23	8mm DIA FLAT WASHERS (MUD FLAP)	8	Z11-02-081
24	8mm DIA SPRING WASHERS	8	Z12-02-08
25	THRUST WASHER	2	WD60-292
26	SCRAPER	2	WD60-705
27	10mm "D" LINCH PIN	2	Z38-03
28	M10 HEX HD SET X 35mm LONG	8	Z26-063S
29	BUFFER 56mm DIA X 40mm LONG	2	Z40-20
30	M8 HEX HD BOLT X 50MM LONG	4	Z26-045B
31	TOP LINK BRACKET ASSEMBLY	1	WD63-TLB
32	BISSEL PIN	2	Z03-22-AW100
33	4MM "R" CLIP	2	Z36-02
34	M16 HEX HD BOLT X 120MM LONG	1	Z26-134B
35	M16 LOCKNUTS	1	Z23-16
36	CIRCLIP	2	Z28-525
37	M10 HEX HD. SET X 25mm LONG (TUFLOCK)	2	Z26-061S
38	10mm DIA MACHINED FLAT WASHER	2	Z11-02-10
39	TURN TABLE ASSY.	1	WD60-TAC
40	BIG ROLLER ASSY IDLER	1	WD610-BRI
41	BIG ROLLER ASSY. DRIVER	1	WD658-BRD
42	SMALL ROLLER ASSY	2	WD65-SMR

TANCO AUTOWRAP 250 SL MODEL 1995

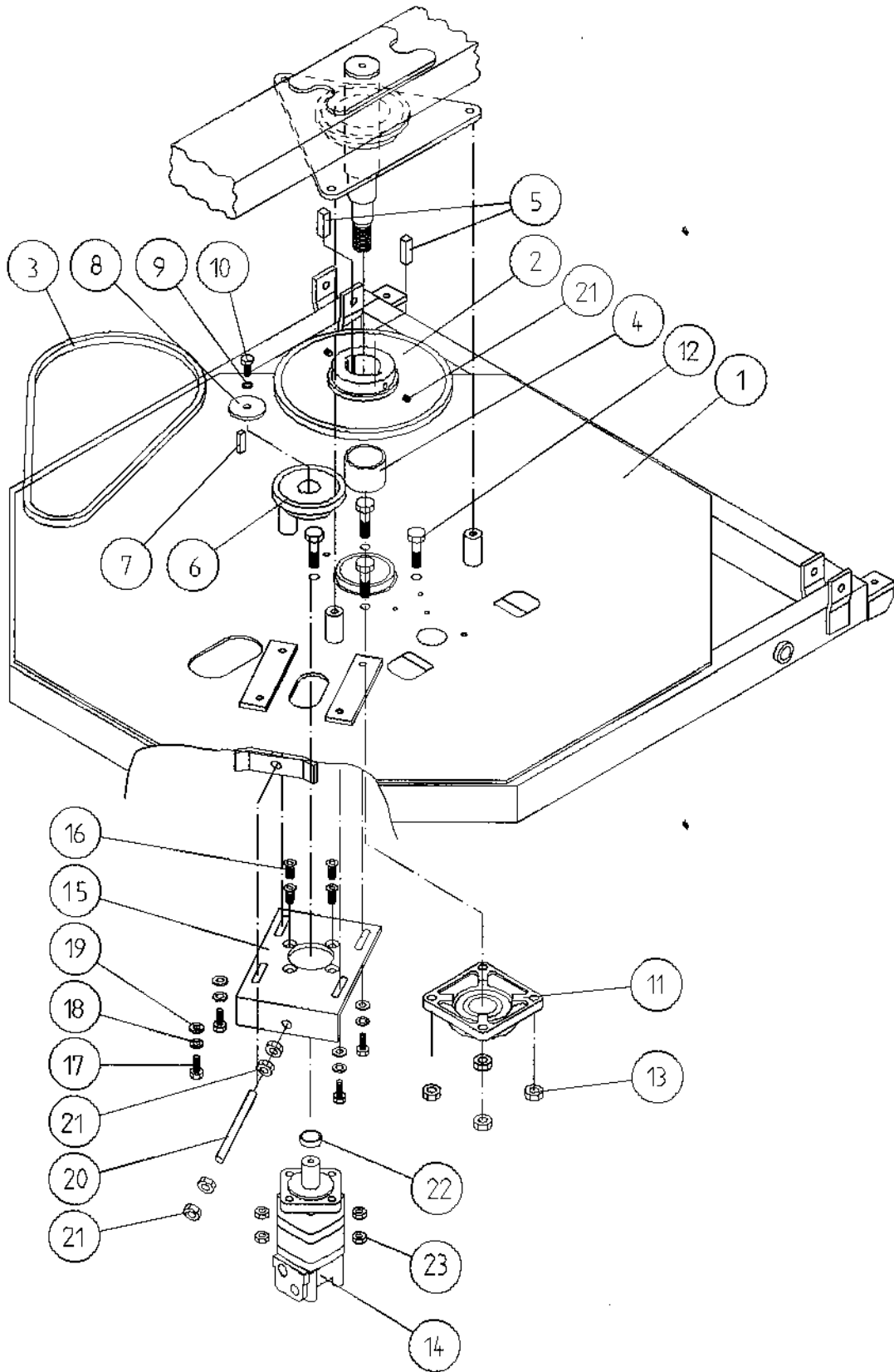


**TANCO AUTOWRAP 250 SL MODEL (3PT. LINKAGE) 1995
MAIN ASSEMBLY**

PARTS LIST

43	SIDE ROLLER	2	Z06-AWR
44	ROLLER MTG. BRACKET	2	WD60-TRMBR
45	BEARING (25mm I.D.)	4	Z06-AWRB-93
46	10mm DIA SPRING WASHERS	17	Z12-02-10
47	1 1/4" PILLOW BLOCK BEARING C/W CAM LOCK COLLAR	4	Z06-485
48	SUPPORT WHEELS (4" DIA)	4	Z06-466
49	AXLE ASSY. C/W GREASE NIPPLE	4	Z03-22-AW/AX Z39-60
50	M20 LOCKNUTS	4	Z23-20
51	1130MM WIDE X 2450MM LONG X 1/4" FLAT BELT	1	Z05-02AWS
52	TURN TABLE COVER PLATE	1	WD60-093
53	BELT GUIDE ASSY	1	WD64-BG
54	M8 LOCKNUTS	4	Z23-08
55	ROLLER MTG. BRACKET	2	WD60-TRMBL

TANCO AUTOWRAP 1995 MODEL TURNTABLE CHAIN DRIVE ASSEMBLY



FILE NAME: WD64 PL9

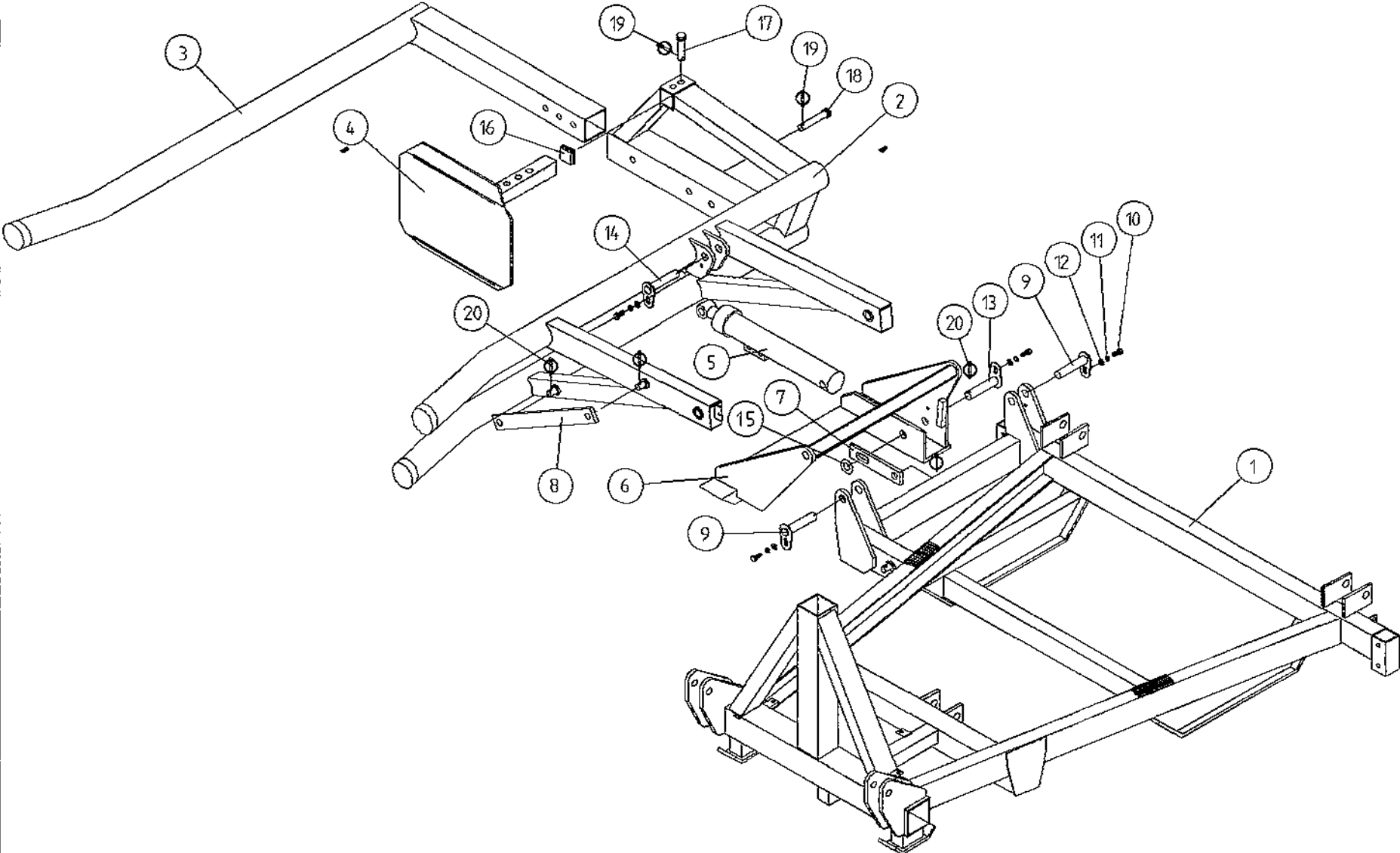
WD64-PL9

TANCO AUTOWRAP 1995 MODEL

TURNABLE CHAIN DRIVE ASSEMBLY

ITEM NO	DESCRIPTION	QTY	PART NO
1	TIPPING FRAME ASSY	1	WD64-TF
2	38 TOOTH X 1" PITCH SPROCKET	1	Z06-D64-38
3	CHAIN 1" PITCH X 54 PITCHES	1	Z09-AW6
4	SPINDLE SPACER	1	WD64-040
5	KEY 5/8" SQ X 50MM LONG	2	WD64-052
6	15 TOOTH X 1" PITCH SPROCKET	1	Z06-I60-046
7	KEY 5/16" SQ X 45MM LONG	1	WD64-053
8	LOCKING COLLAR	1	WD623-071
9	10MM DIA SPRING WASHER	1	Z12-02-10
10	3/8" UNC HEX HD SET Z 1" MM LONG	1	Z27-023S
11	2" DIA FLANGE BEARING C/W CAN LOCK COLLAR	1	Z06-49EC
12	5/8" UNF HEX HD SET X 2" LONG	4	Z31B-064
13	5/8" UNF LOCKNUT	4	Z20-10
14	HYDRAULIC MOTOR	1	Z01-02-RF200
15	HYDRAULIC MOTOR MOUNTING PLATE	1	WD64-001
16	M12 X 40MM ALLEN HD O/S SCREW	4	Z13-5-12
17	M12 HEX HD SET X 30MM LONG	4	Z26-082S
18	12MM DIA SPRING WASHER	4	Z12-02-12
19	12MM DIA FLAT WASHER	4	Z10-02-12
20	M16 THREADED BAR X 150MM LONG	1	WD64-038
21	M16 HEX NUTS	4	Z18-16
22	SPACER	1	WI60-093
23	M12 LOCKNUTS	4	Z23-12

TANCO AUTOWRAP 250 SL MODEL
LIFT ARM AND STABILISER ASSEMBLY

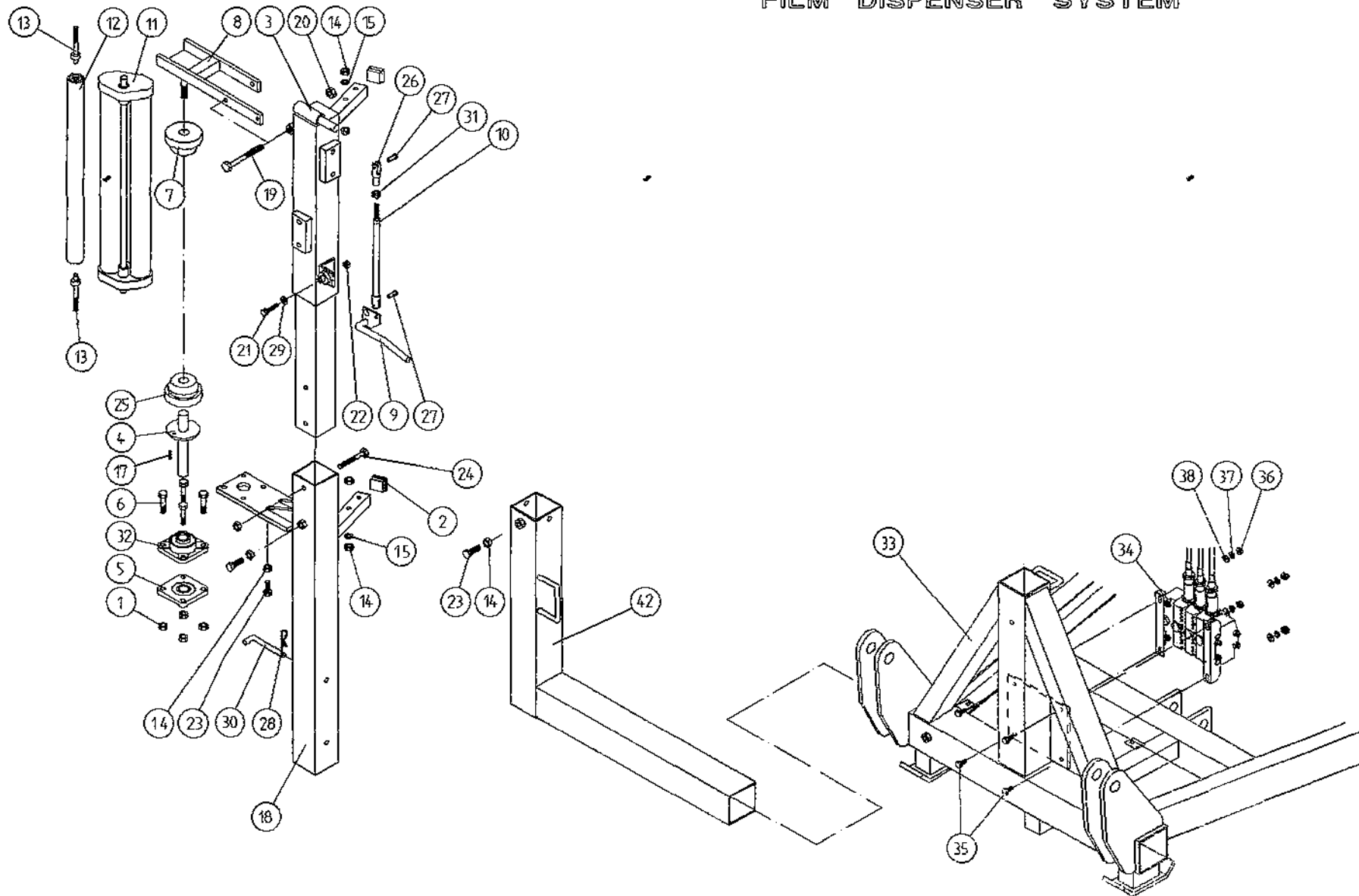


TANCO AUTOWRAP 250SL MODELS
LIFT ARM AND STABILISER ASSEMBLY

PARTS LIST

ITEM NO.	DESCRIPTION	QTY.	PART-NO.
1.	3PT LINKAGE MAIN FRAME	1	WD63-MFSL
2.	LIFT ARM ASSY	1	WD63-LA
3.	ADJUSTABLE OUTER ARM ASSY	1	WD63-LAAA
4.	ADJUSTABLE BALE STOP	1	WD610-LAS
5.	HYDRAULIC RAM	1	Z01-01-AW200
6.	STABILISING LEG ASSY	1	WD63-LASL
7.	STAY (SHORT)	1	WD63-1426
8.	STAY (LONG)	1	WD63-1418
9.	LIFT ARM PIVOT PIN C/W GREASE NIPPLE	2	Z03-01-796
10.	M10 HEX HD SET x 25MM LONG (TUFLOCK)	4	Z26-061S
11.	10mm DIA SPRING WASHER	4	Z12-02-10
12.	10mm DIA FLAT WASHER	4	Z11-02-10
13.	RAM BOTTOM PIVOT PIN C/W GREASE NIPPLE	1	Z03-02-192
14.	RAM TOP PIVOT PIN C/W GREASE NIPPLE	1	Z03-01-797
15.	1" DIA HEAVY DUTY FLAT WASHER	1	Z11-02-25
16.	PLASTIC CAP	1	Z32-10
17.	SPAREX PIN	1	Z03-04-73
18.	SPAREX PIN	1	Z03-04-77
19.	7/16" DIA LINCH PINS	2	Z03-22-06
20.	6mm DIA LINCH PINS	4	Z03-22-03

TANCO AUTOWRAP 250 SL MODEL 1995
FILM DISPENSER SYSTEM



35

WD64-PL48

TANCO AUTOWRAP 250SL MODEL 1995

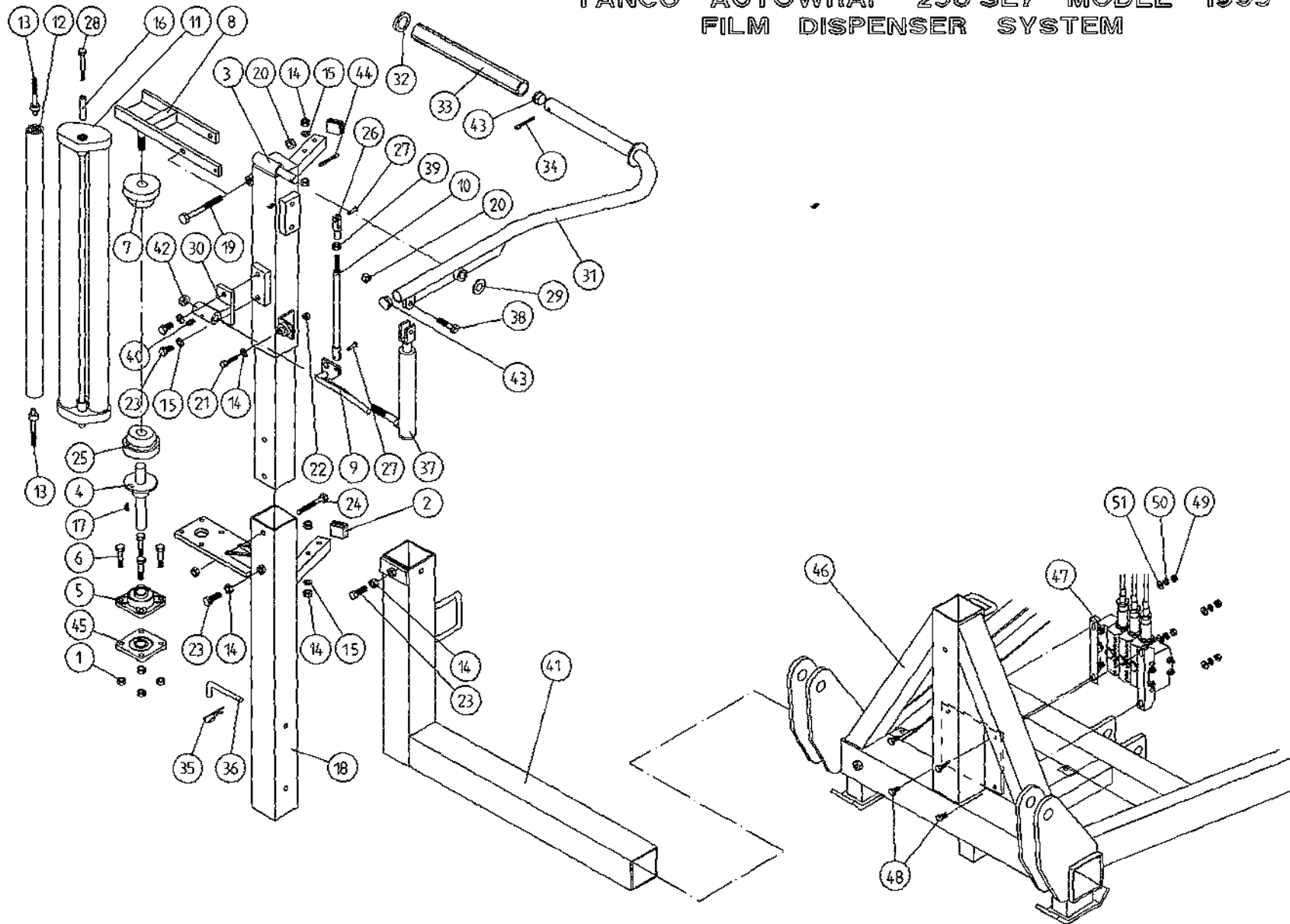
FILM DISPENSER SYSTEM

PARTS LIST

ITEM NO.	DESCRIPTION	QTY.	PART-NO
1.	M10 LOCKNUTS	4	Z23-10
2.	PLASTIC CAPS (TO SUIT 40 X 40 X 30 RHS)	2	Z32-07
3.	DISPENSER MOUNTING (UPPER)	1	WD60-DMUH
4.	FILM SPOOL ASSEMBLY	1	WD60-SPO
5.	1" DIA FLANGE BEARING C/W CAM LOCK	1	Z06-48EC
6.	M10 HEX HD. BOLT X 50mm LONG	4	Z26-066B
7.	CONE (TOP) C/W BALL BEARINGS	1	Z06-45-01
8.	CLAMP ASSEMBLY	1	WD60-DMCA
9.	LEVER ASSEMBLY	1	WD60-DMLA
10.	LINK ASSEMBLY	1	WD60-DMLK
11.*	FILM DISPENSER UNIT MK 6 (70% STRETCH)	1	D613
12.	SLAVE ROLLER SHORT	1	Z06-SR95-S
13.	SLAVE ROLLER PIVOT	2	WD64-SRP
14.	M12 HEX NUTS	7	Z18-12
15.	12mm DIA SPRING WASHER	2	Z12-02-12
16.	SPOOL VALVE MOUNTING PLATE ASSEMBLY	1	WD63-SVM
17.	1/4" DIA TENSION PIN X 3/4" LONG	1	Z03-20-062
18.	DISPENSER MOUNTING (LOWER)	1	WD60-DMLH
19.	M12 HEX HD BOLT X 130mm LONG	1	Z26-094B
20.	M12 LOCKNUT	3	Z23-12
21.	M8 HEX HD BOLT X 35mm LONG	1	Z26-042S
22.	M8 LOCKNUT	1	Z23-08
23.	M12 HEX HD SET X 30mm LONG	3	Z26-082S
24.	M12 HEX HD BOLT X 100mm LONG	1	Z26-092B
25.	CONE (BOTTOM)	1	Z06-45-02
26.	CLEVIS (M10)	1	Z49-335
27.	PIN (5/16" DIA) C/W CLIP	2	Z49-337
28.	4mm "R" CLIP	1	Z36-02
29.	8mm DIA MUD FLAP WASHER	1	Z11-02-081
30.	BISSEL PIN X 110mm LONG	1	WD60-874
31.	5/16" UNF HEX NUT	1	Z15-05
32.	1" DIA FLANGE BEARING	1	Z06-48
33.	3PT. LINKAGE FRAME	1	WD63-MFSL
34.	3 BANK SPOOL VALVE (DIN)	1	Z01-03-018D
35.	M8 HEX HD SET X 20mm LONG	4	Z26-039S
36.	M8 HEX NUT	4	Z18-08
37.	8mm DIA SPRING WASHER	4	Z12-02-08
38.	8mm DIA MUD FLAP WASHER	4	Z11-02-081

* NOTE: From Dispenser Serial no. 15370 onwards item no 11 should read
 FILM DISPENSER UNIT MK 7 (70% STRETCH) PART NO: D614

TANCO AUTOWRAP 250 SL7 MODEL 1995
FILM DISPENSER SYSTEM



FILE NAME WD64-PL48

TANCO AUTOWRAP 250SL7 MODEL 1995
FILM DISPENSING SYSTEM
PARTS LIST

WD64-PL49

ITEM NO.	DESCRIPTION	QTY.	PART-NO.
1.	M10 LOCKNUTS	4	Z23-10
2.	(PLASTIC CAPS TO SUIT 40 x 40 x 3 x RHS)	2	Z32-07
3.	DISPENSER MOUNTING (UPPER)	1	WD60-DMUH
4.	FILM SPOOL ASSEMBLY	1	WD60-SPO
5.	1" DIA FLANGE BEARING C/W CAM LOCK	1	Z06-48EC
6.	M10 HEX HD BOLT X 50mm LONG	4	Z26-066B
7.	CONE (TOP) C/W BALL BEARINGS	1	Z06-45-01
8.	CLAMP ASSEMBLY	1	WD60-DMCA
9.	LEVER ASSEMBLY	1	WD60-DMLA
10.	LINK ASSEMBLY	1	WD60-DMLK
11.	FILM DISPENSER UNIT MK 8 (70% STRETCH)	1	D615
12.	SLAVE ROLLER LONG	1	Z06-SR95-L
13.	SLAVE ROLLER PIVOT	2	WD64-SRP
14.	M12 HEX NUTS	7	Z18-12
15.	12mm DIA SPRING WASHER	2	Z12-02-12
16.	SLEEVE	1	D52012-95
17.	1/4" DIA TENSION PIN x 3/4" LONG	1	Z03-20-062
18.	DISPENSER MOUNTING (LOWER)	1	WD60-DMLH
19.	M12 HEX HD BOLT x 130mm LONG	1	Z26-094B
20.	M12 LOCKNUT	3	Z23-12
21.	M8 HEX HD BOLT x 35mm LONG	1	Z26-042S
22.	M8 LOCKNUT	1	Z23-08
23.	M12 HEX HD SET x 30mm LONG	3	Z26-082S
24.	M12 HEX HD BOLT x 100mm LONG	1	Z26-092B
25.	CONE (BOTTOM)	1	Z06-45-02
26.	CLEVIS (M10)	1	Z49-335
27.	PIN (5/16" DIA) C/W CLIP	2	Z49-337
28.	M12 HEX HD BOLT x 80mm LONG	1	Z26-0901B
29.	3/4" DIA FLAT WASHER	1	Z10-02-19
30.	FILM PULL DOWN BRACKET ASSY	1	WD65-FPDB
31.	FILM PULL DOWN ARM ASSY	1	WD65-FPDA
32.	RETAINING WASHER	1	WD60-859
33.	ROLLER	1	WD60-866
34.	2" x 1/4" SPLIT PIN	1	Z01-21-29
35.	4mm "R" CLIP	1	Z36-02
36.	BISSEL PIN (110mm LONG)	1	WD60-861
37.	HYDRAULIC RAM	1	Z01-01-AW25
38.	M12 HEX HD SET x 50mm LONG	1	Z26-086S
39.	5/16" UNF HEX NUT	1	Z15-05
40.	1/8" BSP ST GREASE NIPPLE	1	Z39-60
41.	DISPENSER BRACKET LOWER SUPPORT	1	WD63-DMLH
42.	M16 LOCKNUT	1	Z23-16
43.	1" GB PLASTIC CAP	2	Z32-14
44.	1/2" x 3/16" SPLIT PIN	1	Z03-20-05
45.	1" DIA FLANGE BEARING	1	Z06-48
46.	3PT LINKAGE FRAME	1	WD63-MFSL
47.	3 BANK SPOOL VALVE (DIN)	1	Z01-03-018D
48.	M8 HEX HD SET X 20MM LONG	4	Z26-039S
49.	M8 HEX NUT	4	Z18-08
50.	8MM DIA SPRING WASHER	4	Z12-02-08
51.	8MM DIA MUD FLAP WASHER	4	Z11-02-081

* **NOTE:** From Dispenser Serial no. 15370 onwards item no 11 should read
FILM DISPENSER UNIT MK 9 (70% STRETCH) PART NO: D616

FAULT FINDING

PROBLEMS.

- | | |
|---|--|
| 1. Drive Roller and Bale belt not driving | Check and replace shear Pins in sprocket on drive roller. |
| 2. Film Breaking | Wash off dispenser and slave rollers Change roll of film. Use recommended films only. |
| 3. Film not wrapping evenly on bale. | Adjust film mast so centre of film roll is aligned with centre of bale . |
| 4. Film Tearing on Ramp. | Check for sharp edges and remove. |
| 5. Bale Skidding on Ramp. | Fit Hessian Bag or piece of carpet to Ramp. |
| 6. Film Dispenser not Pre-Stretching Film. | Check that both Rollers turn when one is turned by hand. If not, fit new gears or replace unit. |
| 7. Tyres coming off 4" platform Support Wheels. | Replace Wheels - Reduce speed below 30 r.p.m. - Do not grease path of wheels on platform. Check that bale does not get trapped between arms and turntable when being loaded.

If this happens lower arm and start again. |

FAULT FINDING

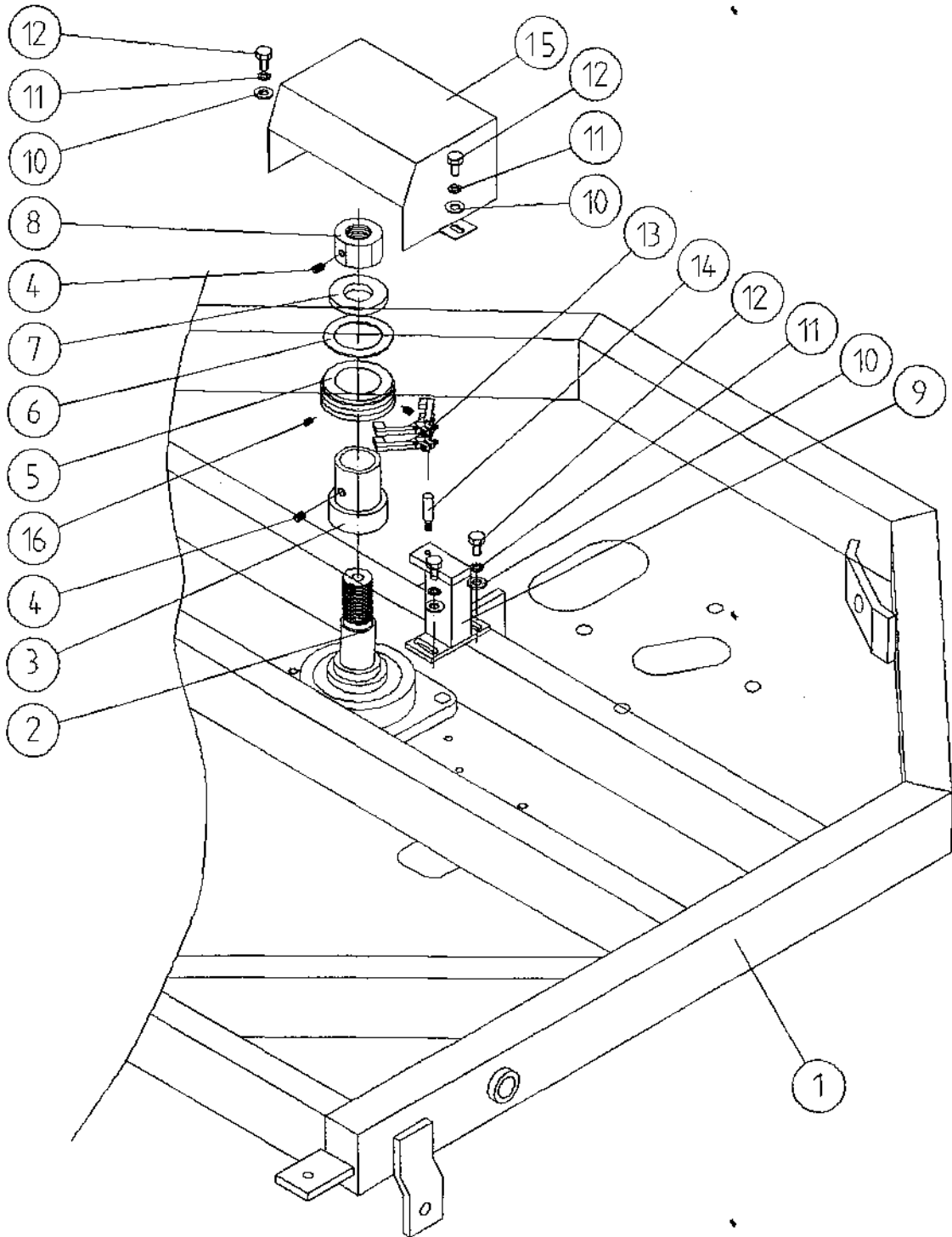
8. MAIN BELT MOVING SIDeways

- (i) Ensure vertical rollers (plastic) are in tight on the bale.
Remember that the bale will reduce in size during wrapping and, on the round bales in particular, the corners will become rounded so that the bale will tend to move sideways due to centrifugal forces. Now, if the plastic rollers are too far apart, the bale will move against one of the plastic rollers causing the belt to move in the opposite direction. Always adjust the vertical plastic rollers so that they keep the bale central on the belt.
- (ii) Adjust bale stop on lift arm so that bale is loaded centrally onto platform.
- (iii) Check that bale belt is fitted so arrow points in direction of travel.
- (iv) Check that both 8" rollers underneath the bale belt are parallel to each other. Remember the golden rule - a belt will always move up a slope:
So, if the belt continually moves to one side, adjust idler roller to a narrower setting on the opposite side to which the belt travels.
- (v) Check that gripface strips are securely fixed to the roller and have not moved out of alignment.
- (vi) Check that it is the same measurement each side by running a string around the belt and measuring it. If one side is longer than the other replace the belt.

**TANCO AUTOWRAP
CUT AND START UNIT (1995)
PARTS LIST**

ITEM NO	DESCRIPTION	QTY	PART-NO.
1.	MAIN MOUNTING FRAME ASSY	1	WD605-MF1
2.	LATCH ASSY.	1	WD605-LA
3.	PUSH PLATE / POINTER ASSY.	1	WD605-PPP
4.	GUIDE ASSY	1	WD605-GD1
5.	PLUNGER ASSY	1	WD605-PL1
6.	GAS SPRING	1	Z07-47
7.	GAS SPRING MOUNTING BRACKET	1	WD605-GSM
8.	WARNER LINEAR ACTUATOR D11 10B5 08	1	ZD605-510
9.	"U" BOLT	1	WD605-45
10.	SPACER 1" X OD X 1/2" ID X 6mm LONG	2	WD605-65
11.	SLEEVE 1/2" DIA O.D. X 13/32" DIA I.D.	1	WD605-47
12.	M8 HEX HD SET X 35mm LONG	1	Z26-042S
13.	TRIGGER ASSEMBLY	1	WD605-TRG
14.	COLLAR 1" DIA BRIGHT RD. X 41.5mm LONG	1	WD605-51
15.	SPACER	1	WD605-100
16.	BLADE GUARD/MOUNTING BRACKET	1	WD605-105
17.	M12 HEX HD BOLT X 80mm LONG	2	Z26-0901B
18.	BISSEL PIN	1	Z03-22-AW100
19.	4mm "R" CLIP	1	Z36-02
20.	SPRING 16mm O.D X 1.5mm WIRE X 48mm LONG	1	Z07-34
21.	OILITE OIL RETAINING BUSH 1 1/8" O.D.	3	Z06-105
22.	1 1/2" X 1/4" DIA TENSION PIN	1	Z03-20-07
23.	M12 LOCKNUTS	2	Z23-12
24.	M12 HEX HD BOLT X 65mm	1	Z26-0832B
25.	M8 GRUB SCREW	1	Z28-008
26.	M8 HEX HD SET X 25mm	3	Z26-040S
27.	M12 BINX LOCKNUT	4	Z23-12BX
28.	M8 LOCKNUT	8	Z18-08
29.	M6 LOCKNUT (NYLOCK)	2	Z23-06
30.	10mm DIA FLAT WASHER	10	Z11-02-10
31.	8mm DIA FLAT WASHER	5	Z11-02-08
32.	6mm DIA FLAT WASHER	2	Z11-02-06
33.	3mm DIA SPLIT PIN	2	Z03-21-02
34.	BLADE	1	WD605-104
35.	MAIN GUARD	1	WD605-MG
36.	M8 HEX HD SET X 20mm LONG	2	Z26-039S
37.	8mm DIA SPRING WASHER	9	Z12-02-08
38.	EDGING STRIP	1	Z44-12
39.	M10 HEX HDSET X 20mm	2	Z26-060S
40.	8mm DIA FLAT WASHER 1" O.D.	4	Z11-02-081
41.	PACKER	1	WD605-133
42.	M8 X 40 COUNTER SUNK BOLT	2	Z13-5-08X40
43.	M12 HEX HD BOLT X 50mm LONG	1	Z26-086B
44.	M10 LOCKNUT	1	Z23-10

TANCO AUTOWRAP - CUT AND START UNIT (1995)
SLIP RING ASSEMBLY



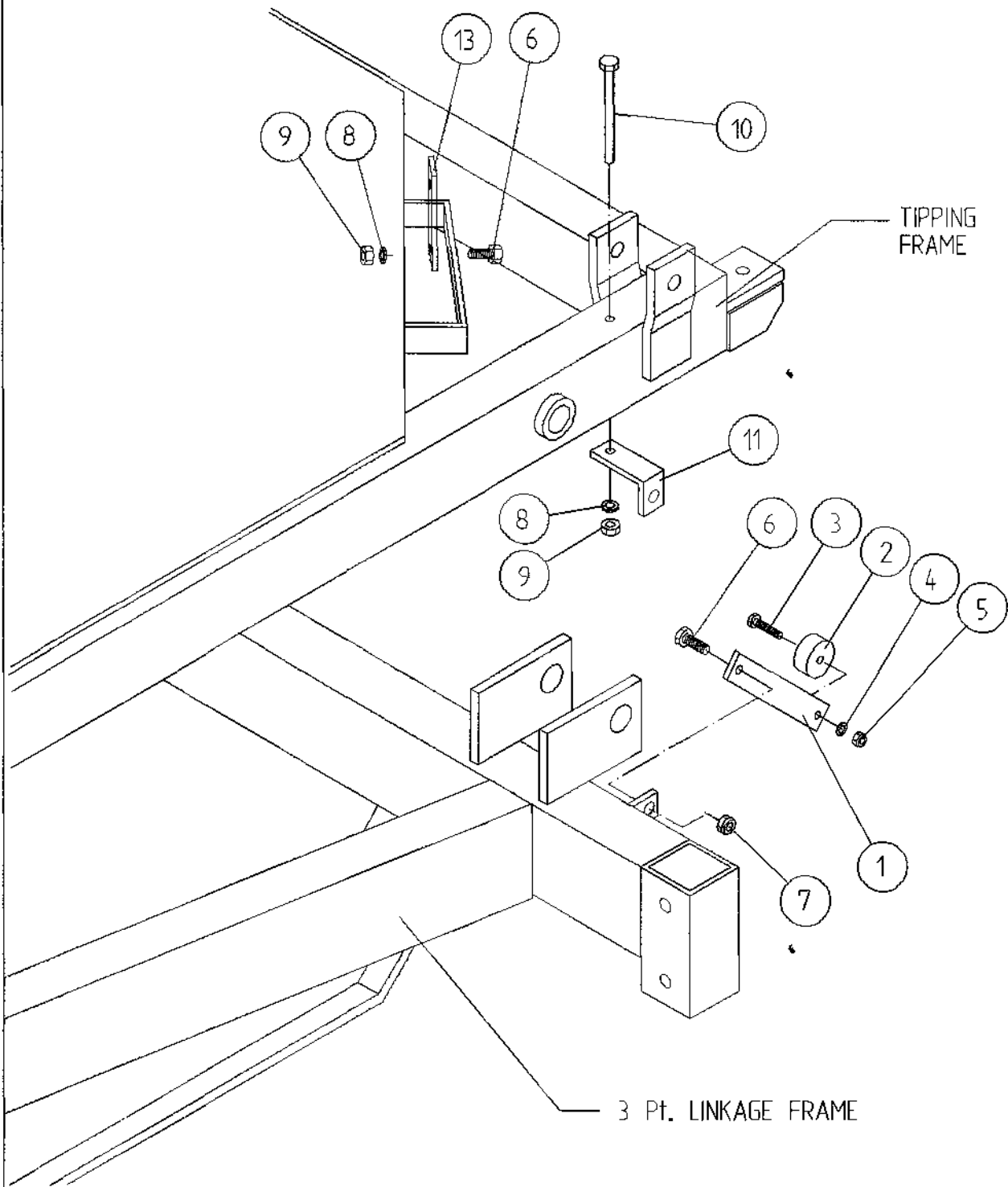
FILE NAME: WD 64 - PL20

**TANCO AUTOWRAP CUT AND START UNIT (1995)
SLIP RING ASSY.**

PARTS LIST

<u>ITEM NO.</u>	<u>DESCRIPTION</u>	<u>QTY.</u>	<u>PART-NO.</u>
1.	UNDERSIDE OF TIPPING FRAME	1	WD64-TF
2.	TURNTABLE CENTRE SHAFT	1	WD64-002
3.	SLIP RING MOUNTING SLEEVE	1	WD605-161
4.	M8 GRUB SCREW x 6 mm LONG	2	Z28-007
5.	SLIP RING ASSY.	1	ZD605-308
6.	INSULATING RING	1	ZD605-350
7.	LOCKING COLLAR	1	WD60-770
8.	1 1/4" UNC HEX NUT	1	Z18-300
9.	SLIP RING MOUNTING BRACKET ASSY	1	WD605-BMB
10.	10mm DIA FLAT WASHER 1" O.D.	4	Z11-02-101
11.	10mm SPRING WASHER	4	Z12-02-10
12.	M10 HEX HD SET x 20mm	4	Z26-060S
13.	BRUSHES	2	ZD605-306
14.	INSULATOR SLEEVE	1	ZD605-302
15.	SLIP RING GUARD ASSY	1	WD605-SRG
16.	M5 GRUB SCREW	2	Z28-005

TANCO AUTOWRAP CUT AND START UNIT (1995) SENSOR & MAGNET MOUNTING BRACKETS



FILE NAME WD64-PL52

TANCO AUTOWRAP CUT AND START UNIT 1995SENSOR AND MAGNET MOUNTING BRACKETSPARTS LIST

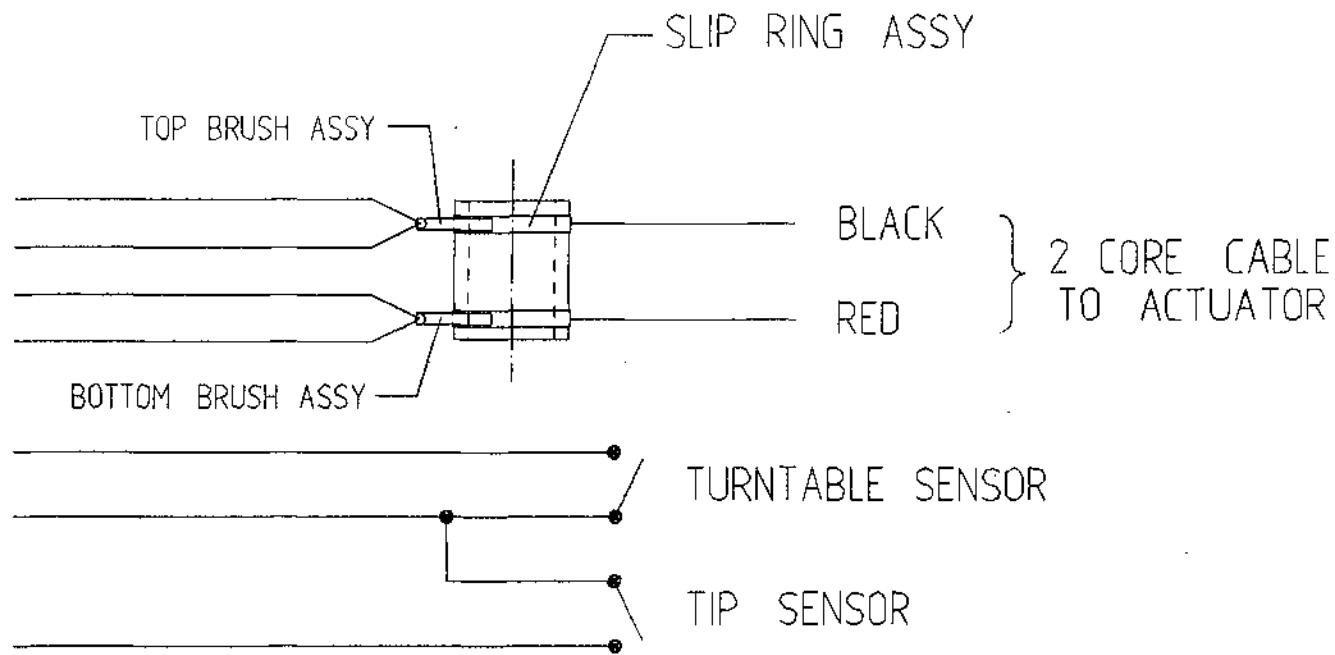
ITEM NO.	DESCRIPTION	QTY.	PART-NO.
1.	MAGNET MOUNTING BRACKET	1	WD605-165
2.	MAGNET	1	D6043
3.	M6 HEX HD SET x 30mm LONG	1	Z26-022S
4.	6mm DIA FLAT WASHER	1	Z11-02-06
5.	M6 LOCKNUT	1	Z23-06
6.	M8 HEX HD SET x 25mm LONG	2	Z26-040S
7.	M8 LOCKNUT (NYLOCK)	1	Z23-08
8.	8mm DIA SPRING WASHER	2	Z12-02-08
9.	M8 HEX NUT	2	Z18-08
10.	M8 HEX HD SET x 100mm LONG	1	Z26-057S
11.	SENSOR MOUNTING BRACKET	1	WD605-58
12.	SENSOR MOUNTING FLAT	1	WD605-164

TANCO AUTOWRAP CUT AND START ELECTRICAL CIRCUIT

42

6 PIN PLUG

- PIN (6) { BLUE
 BLACK
- PIN (5) RED
- PIN (4) BROWN
- PIN (3) GREEN
- PIN (2) WHITE
- PIN (1) YELLOW



TANCO AUTOWRAP

Cut and start Fault Finding Summary.

This summary is to be read in conjunction with operators handbook.

Note: It has been found that most faults can be attributed to a bad power supply. Therefore it is essential that power supply be taken directly from battery terminals, ensuring correct polarity. Operating voltage is 10V D.C. (under load) to 13.5V D.C.

<u>Problem</u>	<u>Proposed Remedy</u>
(1) Bale Wrap monitor does not power on.	(a) Check polarity on connections to battery terminals. (b) Check fuse, in bale wrap controller.
(2) Plunger does not come out after 2 revolutions of turntable.	(a) Ensure that left hand top switch is in auto mode. (b) Check operation in manual mode to ensure that plunger travels in and out. If the plunger does not travel in and out, check all connections from six pin plug, through slip ring to linear actuator.
(2)(i) Buzzer sound continuously "bleep", "bleep" and bale wrap monitor does not count above 2 revs.	(c) check voltage while operating in manual mode. This voltage should be no lower than 10V D.C. (under load). Also check connections on battery terminals. (d) Check that bale wrap monitor is counting revolutions and if not check that turntable sensor is within 6mm of magnet on turntable. (e) Carry out continuity check on turntable sensor, by taking reading cross pins 2 & 3 in six pin plug.

TANCO AUTOWRAP

Cut and Start
Fault Finding Summary.

- (3) Plunger opens too soon and releases film.
 - (a) Check setting for function (1), which indicates number of turns to activate motor. This should be 2.
 - (b) Check setting for function (7), which indicates non auto reset. This should be N.
- (4) Plunger travels out but latch does not engage so plunger travels back in.
 - (a) Increase setting for function (2) which indicates the number of seconds linear actuator powers out for. Setting can be changed in increments of 0.5 sec.
- (5) Plunger snaps closed after about 6 turntable revolutions. This is caused by the Linear Actuator not stopping in park position.
 - (a) Reduce setting for function (4), which indicates the number of seconds required to reverse to park position. Setting can be altered in increments of 0.5 sec. In the park position there should be 5mm to 12mm clearance between cam on push plate assy and latch trigger.
- (6) Plunger opens while turntable rotates after buzzer sounds.
 - (a) Check setting for function (7) which indicates non auto reset. This should be N.
- (7) When machine is tipped plunger does not close.
 - (a) Check clearance between tip sensor on back of tipping frame and magnet on 5mm to 6mm.
 - (b) Check that tip sensor passes magnet, if not adjust magnet position.
 - (c) Check setting for function (5) which indicates the number of seconds from tipping signal until motor is fully closed. This should be 1.5 sec.

EC DECLARATION OF CONFORMITY

according to Directive 89/392/EEC as amended

Manufacturer

TANCO ENGINEERING CO. LTD.
BAGENALSTOWN
CO. CARLOW
IRELAND

Certifies that the following product:

AUTOWRAP

MODEL

250 S/L

SERIAL No.

D1600 - D2600

To which this declaration relates, corresponds to the essential safety requirements of the Directive 89/392/EEC as amended.

To conform to these essential health and safety requirements, the provisions of the following harmonized standards were particularly considered:

EN 292 - 1,2 , EN 294 , EN 1152 , prEN 703 , prEN 811 , prEN 1553 , prEN 982.

DATE 01-01-95

SIGNATURE

Alfred A Cox

ALFRED A. COX, TECHNICAL DIRECTOR